



GIEFER RANCH

WaKeeney, Kansas

Purebred Red Angus Cattle
Registered Quarter Horses

December 8, 2022

25 Heifers

40 Bulls



www.GieferRanch.com

(785) 743-2498

12 Noon CST

WaKeeney Livestock LLC

OUR HOME ON THE RANGE OF THE GREAT AMERICAN PLAINS
YOUR SOURCE FOR PRAIRIE-PROVEN PERFORMANCE SINCE 1999

INTRODUCTION...

To our many repeat buyers, thank you for your continued patronage. To those considering our sale for the first time, thank you for your willingness to introduce Giefer Red Angus genetics into your herd.

We'd like to think we have learned a thing or two after more than two decades raising purebred Red Angus. Years ago, acting on then-prevailing research, we imposed a 42-day breeding season on our cows in the belief it would lead to an improvement in herd fertility; open (and supposedly less fertile) cows were culled. Recent research now indicates that, rather randomly, a fertile cow mated to a fertile bull results in a pregnancy that will "stick" 70% of the time. That means that over the course of a cow cycle, you'd expect 70% of fertile, well-fed cows and heifers to become pregnant and stay pregnant, after two cycles 91%, after three cycles 96-97%, and so on. This is consistent with our findings. Based on these data, we have added a few days to the bulls' work schedules. We have also come to the conclusion that dried distiller's grain isn't what it's cracked up to be; after years of trying to find the fractional sweet spot in our ration, we gave up using it – with nearly immediately positive results in body condition score and hair coat quality. It seems the complete book on DDGs has yet to be written.

This will mark our fourth December sale. Having fewer bovine mouths to feed helps make winter feeding chores more manageable for us as our kids have drifted off to college and beyond. December also falls between cross country and track seasons, as opposed to our former sale date which was smack in the midst of track season! As many of you know, our kids have distinguished themselves as distance runners. All four won high school league championships and state medals, and many regional and four state championship medals have hung on our walls. A December sale frees us for travel to distant collegiate meets.

For you, a December sale presents an opportunity we cherished when we first started building a purebred herd: the ability to acquire age-advantaged bulls and very young heifers. One of the greatest health issues presented to breeders who sell yearling bulls is getting those bulls mature enough to pass a breeding soundness exam while avoiding stress to the skeletal system and deposition of fat in the scrotum. We preferred to purchase long-yearling bulls that hadn't been raised like feeder cattle and young heifers that had time to fully integrate into our herd, under our conditions, well in advance of breeding. This has allowed us to offer you stock out of easy-keeping cows that thrive in our High Plains conditions. All of the cattle featured in this sale have been raised entirely on our ranch.

Our breeding emphasis will continue to prioritize calving ease, extended stayability, low maintenance energy requirements (in other words, superior herd builder genetics) and – most importantly – good disposition.

O come O come to our sale! We look forward to seeing you.

Merry Christmas!

SALE DAY PHONES:

Sale Barn: 785-743-2691

Bernie: 785-635-5036

Nishi: 785-743-2498

SALE LOCATION:

WaKeeney Livestock LLC

First Street and North Railroad Avenue

Owner Kyle Zimmerman: 785-675-9031

DIRECTIONS TO WAKEENEY LIVESTOCK, LLC:

From I-70 Exit 127 (west exit), go north 0.5 mile on First Street. Sale barn is on the left, just over the railroad tracks.

CATALOG BY:

Helen Giefer, helen@giefferranch.com

SALE VETERINARIAN:

Nishi Giefer, DVM

SALE DAY LUNCH:

Courtesy of Giefer Ranch at the sale barn.

DELIVERY:

Purchasers, please make arrangements for transportation of your purchase(s). If you will be shipping on day of sale, please bring a trailer. Boarding (except for purposes of testing--see Trichomoniasis Testing) will be assessed a daily charge if purchase(s) are not picked up within three days of sale.

Please Note:

As always, all Red Angus transfers are free.

Sale animals will be available for viewing at WaKeeney Livestock, LLC, on the morning of the sale.

View this catalog online at GieferRanch.com



OUR PHILOSOPHY...

We recognize that there is no “one size fits all” when it comes to seedstock. Because of this, we believe it is very important that you understand the approaches we take in our breeding program. We believe the cattle we have available for sale will work very well for many – but certainly not for all. We don’t want to simply make a sale – we want satisfied customers. It is for this reason that in the following pages, we have tried to do more than just describe the animals we have in this year’s offering.

OUR FOCUS...

We began our purebred Red Angus herd in 1999 with the purchase of a bull and heifer. It is from that nucleus that our herd has been developed. We purchased some cows thereafter but have maintained a closed cowherd since 2002.

Our first focus was developing sound cattle capable of surviving and thriving on the often limited inputs on the High Plains. Selection pressure was initially applied to produce cattle with calving ease, low birth weight, and high longevity in the herd – meaning an emphasis on expected progeny differences (EPDs) favoring high CED, low BW, and high STAY. Although not an early focus of our herd bull selections, we have also long applied pressure on maintenance energy, preferring a low ME EPD. The latter is simply a reflection of the environment in which our cattle live and conditions to which our cows are subjected. Since 2009 we have also applied selection pressure on the HPG and CEM EPDs, the results of which have become apparent.

We have emphasized these EPDs because we want a cow that will calve unassisted and forage for a significant portion of her nutritional needs yet breed back to produce fertile progeny. In the process, we don’t overlook the other genetic traits, but we won’t pursue a high YW EPD, for example, if it were to come at the expense of any of our main areas of focus.

But there is no EPD for the most important trait for which we have selected – disposition. It is no understatement that we have been very meticulous in culling any cows displaying aggression. Anyone who has had to weigh a newborn calf with the momma cow in one’s hip pocket will fully appreciate this sentiment. We have also found that quiet cows are just better for any scenario – whether it’s working them, loading them, or simply moving among them. University studies back us up on this. Flighty calves don’t gain as well in the feedlot.

We believe the selection criteria we employ will produce cattle that can survive and thrive on limited inputs. We call this Prairie Proven Performance.

OUR CALVES...

Calves are preconditioned with vaccinations for clostridial diseases (blackleg), viral diseases (BVD, IBR, BRSV, PI3), vibriosis, leptospirosis, and pinkeye. In addition, the bulls are vaccinated against footrot, and the heifers receive official calthood vaccination (brucellosis).

OUR COWS...

Every cow and heifer in our herd has been raised on our ranch.

Our cows are bred to calve in late April through May. There are several reasons for selecting this time of year. First, daylight lasts longer to facilitate checking cattle. Second, the weather is usually kinder (although we will long remember the late-April blizzard of 2017) for weighing and tagging newborns. Third, calving on clean grass virtually eliminates the prospect of calf scours. Finally, our grasses are at greatest production in mid-June—six weeks after calving which coincides with a cow’s peak lactation and fully resuming her estrous cycle. In other words, we try to pair the highest nutritional demand of her year with the most optimal nutritional inputs.

We maintain separate breeding pastures for each herd bull and turn bulls out July 18 – no exceptions; the day is an eagerly anticipated holiday on the Giefer Ranch! We retrieve bulls in mid-September, resulting in a 50-day exposure for each cow. In 2016, we began an artificial insemination program for heifers.

Calves are separated in summer while cows remain on pasture until late November. The cows are weighed, assessed a body condition score, hip height measured, dewormed, boosted (with clostridials [blackleg] and virals [BVD, BRSV, PI3, IBR], vibrio, and leptospirosis), and pregnancy checked on their way to winter pasture where stockpiled pasture awaits and where they stay until just prior to calving season. Except in the rare instance of ice or very heavy snowfall, we avoid forage supplementation until mid-February. Cows’ body condition scores are regularly determined. Over the years we have aggressively culled cows that did not appropriately maintain body weight during the winter, the result of which is a cow herd well suited for limited inputs.

During calving season, cows receive supplemental hay as mandated.

OUR LONG YEARLING BULLS...

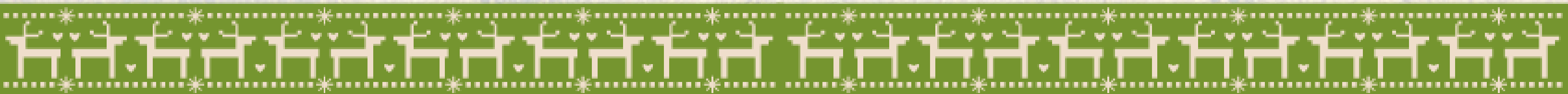
Our bull calves are released into a sizeable trap where they have room to roam and exercise. The bulls are wintered on a ration of grain and free choice hay.

In spring, they are weighed, receive vaccination boosters, and are thoroughly evaluated for soundness. Abnormalities are culled. The bulls spend summer on pasture and/or drylot, as conditions warrant. The bulls are returned to the trap in the fall.

We don’t push our bulls hard. Because our cows calve in May, the bulls, as yearlings, would be too young to sell in a spring sale as coming yearlings. Further, studies we have reviewed suggest that raising bulls on a moderate nutritional plane may increase their breeding lifetime because of two important results: (1) they don’t “outgrow” their feet and legs in their developmental stage, and (2) they deposit less scrotal fat, which appears to contribute to improved semen production.

OUR HERD SIRES...

For information on the pedigree and EPDs of our herd sires, please go to www.GieferRanch.com or www.redangus.org.



A NOTE ON TRICHOMONIASIS TESTING

The Kansas Department of Agriculture's Division of Animal Health has approved Giefer Ranch's Trichomoniasis Herd Management Plan. To gain this certification, we submitted information regarding our fences, herd movements, individual identification, and the virgin status of our sale bulls (we do not lease any bulls). By granting this status, the State allows us to market and ship (within Kansas) any bulls under 24 months of age without testing for Trichomoniasis.

Trichomoniasis is a sexually transmitted cattle disease that causes early term abortion in cows. These abortions occur early enough in pregnancy that the fetus is generally resorbed rather than expelled, so the dead fetus will not likely be found. The cow may become pregnant again later in the breeding season. Often the first sign of infection in the herd is a large number of late and open cows at preg-checking time.

Though the cow can clear the infection, a bull cannot. The protozoa that cause trichomoniasis "hide" in the many folds inside the bull's penile sheath and are impossible to fully eliminate. The only "cure" for trichomoniasis in a bull is slaughter.

Testing a bull for trichomoniasis involves sampling the smegma found in the penile sheath. Conducting the test does incur some risk of damage to the sheath and penis. Because of this we have elected against routinely testing sale bulls. However, if you require a trichomoniasis test to ship outside Kansas, or if you are within Kansas and desire your bull purchase(s) tested, please let us know on sale day and allow us a couple weeks after the sale to complete the testing (at our cost). If testing is requested, we will board your bull(s) free of charge if they are picked up within two weeks of the sale.

OUR WEANLING HEIFERS...

In this sale are some of the best of the best HerdBuilder prospects we have to offer.

BECAUSE OF THE MANY ENVIRONMENTAL AND OPERATIONAL FACTORS WHICH BEAR ON HEIFER PREGNANCY – AND WHICH ARE BEYOND OUR CONTROL – THESE HEIFERS SELL AS IS, WHERE IS, WITH NO BREEDING GUARANTEE.

SALE LOTS...

For buyers' convenience, the bull lots are arranged by sire. Lots 1-11 are by BECKTON JULIAN B139. Lots 12-21 are by GIEFER OCTANT B515. Lots 22-26 are by BECKTON NEW ERA D206. Lots 27-40 are by GIEFER JUXTAPOSITION D591.

ALL CATTLE SELLING ARE 100% RED ANGUS
EPDs listed with each lot are current as of November 1, 2022

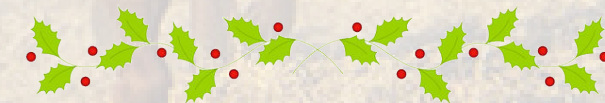


OUR GUARANTEE...

All bulls selling have passed a Breeding Soundness Examination within one month of sale. It is recommended that bulls be re-tested 4-6 weeks prior to breeding season. Bulls selling for \$4,000 or more are guaranteed through the first breeding season.

We strive to insure that all bulls we sell are sound breeders. However, as with any biological creature, deviations from expectations occur. We recognize that aberrations, although rare, are nonetheless part of the livestock industry. Therefore, we extend this breeding guarantee to purchasers of our bulls as a means of redressing those rare instances in which breeding expectations are not met.

1. All bulls sold are guaranteed to be breeders, with the exception of:
 - a. Bulls shown after sale.
 - b. Negligence or willful misconduct on the part of Buyer.
 - c. Any bull shall be considered a breeder if it:
 - (1) Settles one-third or more of the healthy cows he serves; or
 - (2) Is the sire of 20 or more calves; or
 - (3) Settles cows by natural service and passes a fertility test made by a competent veterinarian during any six-month period of trial.
2. All claims for refund must be delivered by Buyer to us within twelve months of purchase.
3. If any bull is claimed to be a non-breeder, then the bull must be returned to us in good condition and complying with Kansas health requirements. We will be entitled to three (3) months trial following the return of the bull in which to prove the bull is a breeder. If at the end of three (3) months we are unable to prove the bull is a breeder, then we will refund to Buyer the purchase price, which will be deemed full satisfaction and settlement. Any expenses incurred for transporting a bull claimed to be a non-breeder will be the responsibility of Buyer. If we prove the bull to be a breeder, then it will be the obligation of Buyer to take delivery of the bull and pay all expenses incurred for transportation.



THIS IS A BREEDING GUARANTEE ONLY.
THIS GUARANTEE DOES NOT EXTEND TO INJURY, ILLNESS, OR DEATH.
INSURANCE FOR INJURY, ILLNESS, OR DEATH IS RECOMMENDED.

OUR BULLS...



3 GIEFER JULIAN J527														
B	5/6/21		A100% AR		Ratio		Data							
GIEFJ527			4475679		Act. BW	127	95							
					SC	34								
					EPD		Top%							
					MARB	0.26	86							
					YG	0.12	81							
					CW	10	90							
					REA	-0.12	93							
					FAT	0.03	78							
					ADG	0.22	59							
					DMI	1.1	23							
MPP 108 Dam Age: 4/25/12														
	ProS	HB	GM	CED	BW	WW	YW	MILK	ME	HPG	CEM	STAY		
EPD	87	76	11	12	-0.6	62	96	29	4	11	6	19		
Top	60	15	94	61	74	44	51	19	55	49	70	7		

OUR BULLS...



7 GIEFER JULIAN J599														
B	5/5/21		A100% AR		Ratio		Data							
GIEFJ599			4475725		Act. BW	108	82							
					SC	33								
					EPD		Top%							
					MARB	0.25	88							
					YG	0.15	91							
					CW	-1	99							
					REA	-0.22	98							
					FAT	0.05	96							
					ADG	0.2	69							
					DMI	0.88	12							
MPP 99 Dam Age: 4/19/15														
	ProS	HB	GM	CED	BW	WW	YW	MILK	ME	HPG	CEM	STAY		
EPD	120	118	2	17	-3.7	54	86	30	-9	14	10	22		
Top	14	1	98	8	18	72	72	13	12	13	9	1		

M GIEFER OCTANT B515														
B	5/5/14		A100% AR		Ratio		Data							
GIEFB515			1713792		Act. BW	86	66							
					SC	42								
					EPD		Top%							
					MARB	0.2	87							
					YG	0.17	88							
					CW	7	90							
					REA	-0.2	94							
					FAT	0.05	89							
					ADG	0.19	74							
					DMI	1.09	20							
MPP 99 Dam Age: 5/12/11														
	ProS	HB	GM	CED	BW	WW	YW	MILK	ME	HPG	CEM	STAY		
EPD	97	91	6	21	-8.5	47	78	22	-6	9	9	22		
Top	41	6	91	1	1	91	87	78	13	88	17	2		

4 GIEFER JULIAN J534														
B	5/1/21		A100% AR		Ratio		Data							
GIEFJ534			4475665		Act. BW	112	84							
					SC	33								
					EPD		Top%							
					MARB	0.26	86							
					YG	0.13	82							
					CW	5	96							
					REA	-0.19	97							
					FAT	0.03	78							
					ADG	0.18	78							
					DMI	0.86	12							
MPP 102 Dam Age: 4/29/11														
	ProS	HB	GM	CED	BW	WW	YW	MILK	ME	HPG	CEM	STAY		
EPD	122	113	9	15	-2.7	53	82	27	-10	14	8	22		
Top	13	1	95	24	33	76	78	36	11	14	39	1		

8 GIEFER JULIAN J604														
B	5/6/21		A100% AR		Ratio		Data							
GIEFJ604			4475713		Act. BW	123	93							
					SC	34.5								
					EPD		Top%							
					MARB	0.38	57							
					YG	0.19	96							
					CW	8	93							
					REA	-0.29	99							
					FAT	0.04	88							
					ADG	0.18	79							
					DMI	0.82	10							
MPP 90 Dam Age: 5/11/15														
	ProS	HB	GM	CED	BW	WW	YW	MILK	ME	HPG	CEM	STAY		
EPD	108	90	18	12	-0.9	54	83	22	-4	12	6	20		
Top	27	4	86	55	68	73	77	78	19	34	68	4		

11 GIEFER JULIAN J639														
B	4/26/21		A100% AR		Ratio		Data							
GIEFJ639			4475809		Act. BW	78	55							
					SC	33.5								
					EPD		Top%							
					MARB	0.24	89							
					YG	0.15	90							
					CW	-2	99							
					REA	-0.27	99							
					FAT	0.04	91							
					ADG	0.17	85							
					DMI	0.74	8							
MPP Dam Age: 5/11/18														
	ProS	HB	GM	CED	BW	WW	YW	MILK	ME	HPG	CEM	STAY		
EPD	90	89	1	20	-6.9	47	74	31	-2	12	11	19		
Top	54	4	98	1	1	88	87	8	25	35	4	7		

1 GIEFER JULIAN J503														
B	5/6/21		A100% AR		Ratio		Data							
GIEFJ503			4475733		Act. BW	98	73							
					SC	38								
					EPD		Top%							
					MARB	0.28	82							
					YG	0.15	89							
					CW	8	93							
					REA	-0.21	98							
					FAT	0.03	80							
					ADG	0.19	74							
					DMI	1.08	22							
MPP 101 Dam Age: 5/27/16														
	ProS	HB	GM	CED	BW	WW	YW	MILK	ME	HPG	CEM	STAY		
EPD	116	106	10	17	-4	54	85	28	-4	14	10	21		
Top	17	1	94	7	14	74	75	25	21	15	7	2		

5 GIEFER JULIAN J543														
B	4/30/21		A100% AR		Ratio		Data							
GIEFJ543			4475705		Act. BW	95	72							
					SC	33.5								
					EPD		Top%							
					MARB	0.42	47							
					YG	0.15	91							
					CW	5	96							
					REA	-0.18	97							
					FAT	0.04	93							
					ADG	0.17	83							
					DMI	0.9	13							
MPP 104 Dam Age: 4/24/15														
	ProS	HB	GM	CED	BW	WW	YW	MILK	ME	HPG	CEM	STAY		
EPD	128	108	21	18	-4.7	49	77	27	2	16	10	22		
Top	8	1	83	4	8	85	85	32	43	2	9	1		

9 GIEFER JULIAN J608														
B	5/3/21		A100% AR		Ratio		Data							
GIEFJ608			4475751		Act. BW	102	76							
					SC	32.5								
					EPD		Top%							
					MARB	0.47	35							
					YG	0.15	89							
					CW	5	96							
					REA	-0.23	99							
					FAT	0.03	83							
					ADG	0.19	77							
					DMI	1.1	23							
MPP 106 Dam Age: 4/9/17														
	ProS	HB	GM	CED	BW	WW	YW	MILK	ME	HPG	CEM	STAY		
EPD	104	81	23	17	-5.1	51	81	29	-1	13	9	18		
Top	33	10	79	5	6	81	80	20	31	16	18	16		



2 GIEFER JULIAN J519														
B	5/7/21		A100% AR		Ratio		Data							
GIEFJ519			4475691		Act. BW	95	72							
					SC	34.5								
					EPD		Top%							
					MARB	0.26	86							
					YG	0.15	90							
					CW	-1	99							
					REA	-0.21	98							
					FAT	0.05	95							
					ADG	0.18	81							
					DMI	0.84	11							
MPP 103 Dam Age: 4/20/13														
	ProS	HB	GM	CED	BW	WW	YW	MILK	ME	HPG	CEM	STAY		
EPD	101	98	3	18	-5.3	48	76	31	-3	13	10	20		
Top	36	1	98	3	5	87	85	9	22	21	6	4		

6 GIEFER JULIAN J551														
B	5/9/21		A100% AR		Ratio		Data							
GIEFJ551			4475775		Act. BW	91	65							
					SC	30.5								
					EPD		Top%							
					MARB	0.29	80							
					YG	0.16	92							
					CW	0	99							
					REA	-0.22	98							
					FAT	0.05	96							
					ADG	0.16	87							
					DMI	0.75	8							
MPP 102 Dam Age: 4/30/18														
	ProS	HB	GM	CED	BW	WW	YW	MILK	ME	HPG	CEM	STAY		
EPD	119	115	4	19	-5.9	49	74	31	-5	14	11	22		
Top	15	1	97	2	3	85	87	7	17	12	2	1		

10 GIEFER JULIAN J625														
B	6/7/21		A100% AR		Ratio		Data							
GIEFJ625			4475767		Act. BW	95	71							
					SC	30.5								
					EPD		Top%							
					MARB	0.25	88							
					YG	0.16	92							
					CW	-1	99							
					REA	-0.23	99							
					FAT	0.05	96							
					ADG	0.18	78							
					DMI	0.79	9							
MPP 88 Dam Age: 5/3/17														

OUR BULLS...

13 GIEFER OCTANT J540													
B	5/28/21		A100% AR		Ratio		Data						
GIEFJ540			4475693		Act. BW	91	69						
BUF CRK ORION W011													
GIEFER OCTANT B5151713792													
GIEFER SUNFLOWER Y015													
SC													
EPD Top%													
MARB 0.24 89													
YG 0.14 86													
CW 11 89													
REA -0.18 97													
FAT 0.03 71													
ADG 0.18 79													
DMI 1.17 27													
MPP 97 Dam Age: 5/4/13													
ProS	HB	GM	CED	BW	WW	YW	MILK	ME	HPG	CEM	STAY		
EPD	110	100	10	18	-5.7	49	78	19	-3	11	8	22	
Top	24	1	94	4	3	86	84	95	23	49	26	1	



Lot 16



Lot 14

16 GIEFER OCTANT J579													
B	5/16/21		A100% AR		Ratio		Data						
GIEFJ579			4475785		Act. BW	100	72						
BUF CRK ORION W011													
GIEFER OCTANT B5151713792													
GIEFER SUNFLOWER Y015													
SC													
EPD Top%													
MARB 0.25 88													
YG 0.16 91													
CW 5 96													
REA -0.21 98													
FAT 0.04 90													
ADG 0.18 79													
DMI 0.94 15													
MPP Dam Age: 5/3/18													
ProS	HB	GM	CED	BW	WW	YW	MILK	ME	HPG	CEM	STAY		
EPD	110	102	8	18	-5.9	49	78	23	-7	12	9	21	
Top	24	1	96	2	3	85	83	68	15	42	16	1	



Lot 17

14 GIEFER OCTANT J553													
B	5/11/21		A100% AR		Ratio		Data						
GIEFJ553			4475667		Act. BW	111	83						
BUF CRK ORION W011													
GIEFER OCTANT B5151713792													
GIEFER SUNFLOWER Y015													
SC													
EPD Top%													
MARB 0.26 86													
YG 0.13 83													
CW 15 80													
REA -0.13 94													
FAT 0.02 65													
ADG 0.22 57													
DMI 1.36 42													
MPP 102 Dam Age: 4/27/11													
ProS	HB	GM	CED	BW	WW	YW	MILK	ME	HPG	CEM	STAY		
EPD	76	58	17	15	-3.8	53	88	22	6	9	7	19	
Top	78	45	88	18	17	76	69	77	70	89	60	12	

15 GIEFER OCTANT J564													
B	4/25/21		A100% AR		Ratio		Data						
GIEFJ564			4475777		Act. BW	106	76						
BUF CRK ORION W011													
GIEFER OCTANT B5151713792													
GIEFER SUNFLOWER Y015													
SC													
EPD Top%													
MARB 0.31 75													
YG 0.15 90													
CW 19 65													
REA -0.13 94													
FAT 0.03 67													
ADG 0.23 51													
DMI 1.21 30													
MPP Dam Age: 5/16/18													
ProS	HB	GM	CED	BW	WW	YW	MILK	ME	HPG	CEM	STAY		
EPD	116	92	23	16	-3.5	62	99	25	-2	12	8	20	
Top	18	3	78	10	21	43	46	50	25	44	31	4	

17 GIEFER OCTANT J582													
B	4/27/21		A100% AR		Ratio		Data						
GIEFJ582			4475727		Act. BW	82	61						
BUF CRK ORION W011													
GIEFER OCTANT B5151713792													
GIEFER SUNFLOWER Y015													
SC													
EPD Top%													
MARB 0.24 89													
YG 0.16 91													
CW 6 95													
REA -0.2 98													
FAT 0.04 90													
ADG 0.18 81													
DMI 0.9 13													
MPP 93 Dam Age: 7/29/16													
ProS	HB	GM	CED	BW	WW	YW	MILK	ME	HPG	CEM	STAY		
EPD	108	100	8	20	-7.4	49	77	24	-9	12	10	20	
Top	26	1	96	1	1	85	84	59	12	37	9	3	



Lot 18

18 GIEFER OCTANT J583													
B	5/5/21		A100% AR		Ratio		Data						
GIEFJ583			4475707		Act. BW	102	77						
BUF CRK ORION W011													
GIEFER OCTANT B5151713792													
GIEFER SUNFLOWER Y015													
SC													
EPD Top%													
MARB 0.36 62													
YG 0.15 89													
CW 10 91													
REA -0.18 97													
FAT 0.03 81													
ADG 0.19 76													
DMI 1.11 23													
MPP 101 Dam Age: 6/1/15													
ProS	HB	GM	CED	BW	WW	YW	MILK	ME	HPG	CEM	STAY		
EPD	119	97	22	17	-5	46	76	18	-1	13	8	22	
Top	14	2	80	4	6	90	86	97	27	18	34	1	

19 GIEFER OCTANT J589													
B	4/30/21		A100% AR		Ratio		Data						
GIEFJ589			4475735		Act. BW	89	66						
BUF CRK ORION W011													
GIEFER OCTANT B5151713792													
GIEFER SUNFLOWER Y015													
SC													
EPD Top%													
MARB 0.27 84													
YG 0.17 93													
CW 9 92													
REA -0.17 97													
FAT 0.04 93													
ADG 0.19 74													
DMI 1.07 21													
MPP 110 Dam Age: 7/27/16													
ProS	HB	GM	CED	BW	WW	YW	MILK	ME	HPG	CEM	STAY		
EPD	108	97	11	20	-6.7	51	82	26	-1	11	10	21	
Top	26	2	93	1	1	81	79	40	28	51	5	2	



Lot 20

20 GIEFER OCTANT J633													
B	5/2/21		A100% AR		Ratio		Data						
GIEFJ633			4475801		Act. BW	108	78						
BUF CRK ORION W011													
GIEFER OCTANT B5151713792													
GIEFER SUNFLOWER Y015													
SC													
EPD Top%													
MARB 0.3 77													
YG 0.14 88													
CW 11 88													
REA -0.16 96													
FAT 0.03 80													
ADG 0.21 63													
DMI 1.01 18													
MPP Dam Age: 5/12/18													
ProS	HB	GM	CED	BW	WW	YW	MILK	ME	HPG	CEM	STAY		
EPD	102	81	21	19	-5.8	53	86	23	-1	12	8	20	
Top	35	9	82	2	3	77	72	70	29	37	35	5	

21 GIEFER OCTANT J641													
B	5/13/21		A100% AR		Ratio		Data						
GIEFJ641			4475811		Act. BW	91	65						
BUF CRK ORION W011													
GIEFER OCTANT B5151713792													
GIEFER SUNFLOWER Y015													
SC													
EPD Top%													
MARB 0.26 86													
YG 0.14 88													
CW 7 95													
REA -0.14 95													
FAT 0.04 92													
ADG 0.19 75													
DMI 1.03 19													
MPP Dam Age: 4/27/18													
ProS	HB	GM	CED	BW	WW	YW	MILK	ME	HPG	CEM	STAY		
EPD	104	93	11	19	-7.1	48	79	25	-5	12	9	20	
Top	32	3	94	1	1	86	83	53	17	39	13	4	



Lot 22

22 GIEFER NEW ERA J515													
B	5/12/21		A100% AR		Ratio		Data						
GIEFJ515			4475663		Act. BW	107	80						
BECKTON NEW ERA B265 J2													
BECKTON NEW ERA D206 E33551017													
BECKTON MINOLA B063 E													
SC													
EPD Top%													
MARB 0.26 86													
YG 0.11 75													
CW 11 88													
REA -0.21 98													
FAT 0.01 40													
ADG 0.2 70													
DMI 1.11 23													
MPP 99 Dam Age: 5/12/11													
ProS	HB	GM	CED	BW	WW	YW	MILK	ME	HPG	CEM	STAY		
EPD	77	63	14	17	-4.5	55	87	21	-2	12	6	17	
Top	76	35	92	8	10	70	71	88	24	35	78	24	

OUR BULLS...



Lot 23

25 GIEFER NEW ERA J616													
B	5/12/21	A100% AR			Ratio		Data						
GIEFJ616		4475761			Act. BW	93	69						
BECKTON NEW ERA B265 J2													
BECKTON NEW ERA D206 E33551017													
BECKTON MINOLA B063 E													
SC													
33.5													
EPD Top%													
MARB 0.26 86													
YG 0.12 79													
CW 9 92													
REA -0.19 97													
FAT 0.02 61													
ADG 0.2 70													
DMI 1.08 22													
MPP 92 Dam Age: 4/21/17													
ProS	HB	GM	CED	BW	WW	YW	MILK	ME	HPG	CEM	STAY		
EPD	85	71	14	19	-6	51	83	23	-2	12	9	17	
Top	63	21	91	1	2	81	77	73	26	36	17	25	



Lot 29

32 GIEFER JUXTAPOSITION J556													
B	5/17/21	A100% AR			Ratio		Data						
GIEFJ556		4475651			Act. BW	106	79						
BECKTON JULIAN B139 J8													
GIEFER JUXTAPOSITION D5913580565													
GIEFER MEADOWLARK B091													
SC													
29.5													
EPD Top%													
MARB 0.28 82													
YG 0.12 81													
CW 15 81													
REA -0.17 97													
FAT 0.02 48													
ADG 0.19 74													
DMI 1.23 32													
MPP 104 Dam Age: 5/8/09													
ProS	HB	GM	CED	BW	WW	YW	MILK	ME	HPG	CEM	STAY		
EPD	112	96	17	15	-2.2	53	83	25	0	11	9	21	
Top	21	2	88	22	43	77	77	52	35	47	13	2	

23 GIEFER NEW ERA J539													
B	4/22/21	A100% AR			Ratio		Data						
GIEFJ539		4475695			Act. BW	95	72						
BECKTON NEW ERA B265 J2													
BECKTON NEW ERA D206 E33551017													
BECKTON MINOLA B063 E													
SC													
33													
EPD Top%													
MARB 0.19 95													
YG 0.11 73													
CW 4 97													
REA -0.23 99													
FAT 0.02 56													
ADG 0.2 70													
DMI 1.07 21													
MPP 93 Dam Age: 5/9/13													
ProS	HB	GM	CED	BW	WW	YW	MILK	ME	HPG	CEM	STAY		
EPD	68	65	3	18	-4.8	51	83	25	-2	11	9	16	
Top	87	33	98	2	8	81	77	54	26	56	16	39	

26 GIEFER NEW ERA J618													
B	5/26/21	A100% AR			Ratio		Data						
GIEFJ618		4475769			Act. BW	108	81						
BECKTON NEW ERA B265 J2													
BECKTON NEW ERA D206 E33551017													
BECKTON MINOLA B063 E													
SC													
33													
EPD Top%													
MARB 0.34 67													
YG 0.12 81													
CW 16 76													
REA -0.19 97													
FAT 0.01 38													
ADG 0.21 62													
DMI 1.16 27													
MPP 99 Dam Age: 4/30/17													
ProS	HB	GM	CED	BW	WW	YW	MILK	ME	HPG	CEM	STAY		
EPD	97	72	25	16	-3.1	57	91	26	-4	13	7	17	
Top	43	20	75	12	26	62	63	45	21	25	42	35	

29 GIEFER JUXTAPOSITION J538													
B	5/13/21	A100% AR			Ratio		Data						
GIEFJ538		4475723			Act. BW	110	83						
BECKTON JULIAN B139 J8													
GIEFER JUXTAPOSITION D5913580565													
GIEFER MEADOWLARK B091													
SC													
32.5													
EPD Top%													
MARB 0.43 44													
YG 0.2 97													
CW 17 73													
REA -0.28 99													
FAT 0.03 75													
ADG 0.2 67													
DMI 1.43 49													
MPP 101 Dam Age: 4/30/15													
ProS	HB	GM	CED	BW	WW	YW	MILK	ME	HPG	CEM	STAY		
EPD	109	84	25	16	-3.5	55	87	27	6	12	9	20	
Top	26	7	76	10	21	70	70	29	70	42	20	3	



Lot 33



Lot 24

27 GIEFER JUXTAPOSITION J526													
B	4/28/21	A100% AR			Ratio		Data						
GIEFJ526		4475737			Act. BW	123	93						
BECKTON JULIAN B139 J8													
GIEFER JUXTAPOSITION D5913580565													
GIEFER MEADOWLARK B091													
SC													
31													
EPD Top%													
MARB 0.4 52													
YG 0.16 93													
CW 10 90													
REA -0.21 98													
FAT 0.04 84													
ADG 0.21 64													
DMI 1.1 23													
MPP 104 Dam Age: 4/26/16													
ProS	HB	GM	CED	BW	WW	YW	MILK	ME	HPG	CEM	STAY		
EPD	121	97	25	15	-2.2	53	87	26	0	15	7	21	
Top	13	2	76	21	43	75	71	46	36	6	44	2	

30 GIEFER JUXTAPOSITION J544													
B	4/29/21	A100% AR			Ratio		Data						
GIEFJ544		4475773			Act. BW	85	60						
BECKTON JULIAN B139 J8													
GIEFER JUXTAPOSITION D5913580565													
GIEFER MEADOWLARK B091													
SC													
33.5													
EPD Top%													
MARB 0.36 62													
YG 0.19 96													
CW 13 85													
REA -0.29 99													
FAT 0.03 76													
ADG 0.19 76													
DMI 1.27 35													
MPP Dam Age: 4/27/18													
ProS	HB	GM	CED	BW	WW	YW	MILK	ME	HPG	CEM	STAY		
EPD	122	103	19	19	-5.9	49	79	26	-3	13	11	21	
Top	12	1	86	1	3	84	82	41	22	20	3	3	

33 GIEFER JUXTAPOSITION J558													
B	5/13/21	A100% AR			Ratio		Data						
GIEFJ558		4475715			Act. BW	100	76						
BECKTON JULIAN B139 J8													
GIEFER JUXTAPOSITION D5913580565													
GIEFER MEADOWLARK B091													
SC													
31													
EPD Top%													
MARB 0.4 52													
YG 0.17 94													
CW 16 75													
REA -0.23 99													
FAT 0.03 67													
ADG 0.2 68													
DMI 1.32 39													
MPP 96 Dam Age: 4/24/15													
ProS	HB	GM	CED	BW	WW	YW	MILK	ME	HPG	CEM	STAY		
EPD	129	103	26	16	-3.9	53	86	24	-7	12	8	21	
Top	8	1	74	9	16	75	73	60	15	39	23	2	

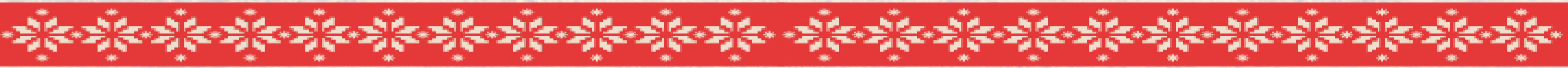
24 GIEFER NEW ERA J576													
B	5/16/21	A100% AR			Ratio		Data						
GIEFJ576		4475781			Act. BW	99	71						
BECKTON NEW ERA B265 J2													
BECKTON NEW ERA D206 E33551017													
BECKTON MINOLA B063 E													
SC													
32.5													
EPD Top%													
MARB 0.27 84													
YG 0.13 82													
CW 7 94													
REA -0.2 98													
FAT 0.03 71													
ADG 0.19 73													
DMI 1.09 22													
MPP Dam Age: 4/30/18													
ProS	HB	GM	CED	BW	WW	YW	MILK	ME	HPG	CEM	STAY		
EPD	83	75	8	18	-5	57	88	29	-2	13	9	17	
Top	67	16	96	2	6	65	70	16	25	28	21	25	

28 GIEFER JUXTAPOSITION J531													
B	4/27/21	A100% AR			Ratio		Data						
GIEFJ531		4475675			Act. BW	95	71						
BECKTON JULIAN B139 J8													
GIEFER JUXTAPOSITION D5913580565													
GIEFER MEADOWLARK B091													
SC													
32.5													
EPD Top%													
MARB 0.26 86													
YG 0.13 84													
CW 13 85													
REA -0.24 99													
FAT 0.01 44													
ADG 0.18 78													
DMI 1.22 31													
MPP 104 Dam Age: 4/19/12													
ProS	HB	GM	CED	BW	WW	YW	MILK	ME	HPG	CEM	STAY		
EPD	102	90	12	18	-5.2	51	80	27	1	12	9	20	
Top	35	4	93	3	5	81	81	30	39	29	11	4	

31 GIEFER JUXTAPOSITION J550													
B	5/2/21	A100% AR			Ratio		Data						
GIEFJ550		4475717			Act. BW	103	78						
BECKTON JULIAN B139 J8													
GIEFER JUXTAPOSITION D5913580565													
GIEFER MEADOWLARK B091													
SC													
32.5													
EPD Top%													
MARB 0.4 52													
YG 0.16 92													
CW 14 82													
REA -0.22 98													
FAT 0.03 69													
ADG 0.2 70													
DMI 1.2 29													
MPP 88 Dam Age: 4/29/15													
ProS	HB	GM	CED	BW	WW	YW	MILK	ME	HPG	CEM	STAY		
EPD	111	85	26	16	-2.9	53	85	21	9	14	8	21	
Top	23	6	74	10	30	75	74	83	82	9	35	2	



Lot 34



OUR BULLS...

OUR HEIFERS...

34 GIEFER JUXTAPOSITION J559													
B	5/5/21		A100% AR		Ratio		Data						
GIEFJ559			4475729		Act. BW	100	76						
BECKTON JULIAN B139 J8													
GIEFER JUXTAPOSITION D5913580565													
GIEFER MEADOWLARK B091													
SC 32													
EPD Top%													
MARB 0.45 40													
YG 0.17 94													
ANDRAS IN FOCUS 1158													
GIEFER SHAWNEE D0593580489													
GIEFER SHAWNEE Y045													
CW 12 87													
REA -0.23 99													
FAT 0.03 80													
ADG 0.19 77													
DMI 1.19 28													
MPP 99 Dam Age: 5/2/16													
ProS HB GM CED BW WW YW MILK ME HPG CEM STAY													
EPD 120 91 29 18 -4.9 46 75 25 5 15 9 21													
Top 14 4 67 3 7 90 86 54 63 6 16 2													

37 GIEFER JUXTAPOSITION J592													
B	5/1/21		A100% AR		Ratio		Data						
GIEFJ592			4475701		Act. BW	126	95						
BECKTON JULIAN B139 J8													
GIEFER JUXTAPOSITION D5913580565													
GIEFER MEADOWLARK B091													
SC 33.5													
EPD Top%													
MARB 0.26 86													
YG 0.15 91													
BUF CRK ORION W011													
GIEFER GUNSMOKE B0921713824													
GIEFER GUNSMOKE X107													
CW 7 95													
REA -0.24 99													
FAT 0.03 81													
ADG 0.22 52													
DMI 1.21 30													
MPP 102 Dam Age: 5/25/14													
ProS HB GM CED BW WW YW MILK ME HPG CEM STAY													
EPD 101 93 8 14 -1.6 58 94 26 -2 12 7 20													
Top 37 3 96 33 55 61 57 41 25 31 44 4													

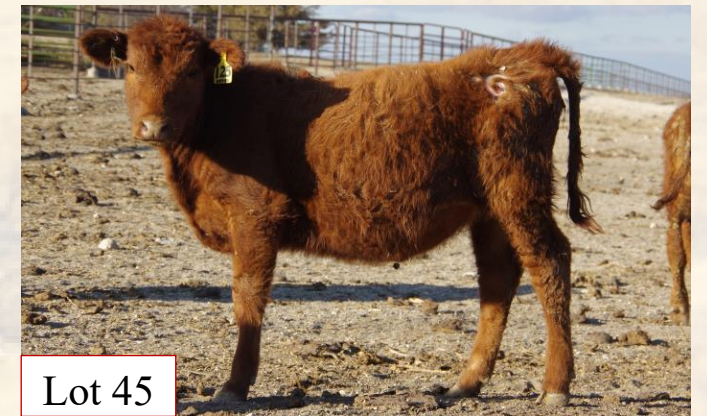
41 GIEFER SHAWNEE K073													
C	5/6/22		A100% AR		Ratio		Data						
GIEFK073			4677245		Act. BW	103	73						
BECKTON JULIAN B139 J8													
GIEFER JUXTAPOSITION D5913580565													
GIEFER MEADOWLARK B091													
SC													
EPD Top%													
MARB 0.34 68													
YG 0.15 90													
GIEFER RED REVOLUTION 529													
GIEFER SHAWNEE Y0551452865													
GIEFER SHAWNEE W072													
CW 14 83													
REA -0.21 98													
FAT 0.02 66													
ADG 0.21 62													
DMI 1.43 47													
MPP 103 Dam Age: 4/23/11													
ProS HB GM CED BW WW YW MILK ME HPG CEM STAY													
EPD 102 86 16 14 -1.9 58 92 25 6 12 8 21													
Top 34 5 89 30 49 60 61 59 70 38 35 2													

44 GIEFER COTTONWOOD K146													
C	4/30/22		A100% AR		Ratio		Data						
GIEFK146			4677317		Act. BW	102	73						
LCS Z 6													
GIEFER PARADIGM G5064158232													
GIEFER MISS YO 2006													
SC													
EPD Top%													
MARB 0.33 69													
YG 0.16 92													
GIEFER OCTANT B515													
GIEFER COTTONWOOD E1163826267													
GIEFER MISS YO A061													
CW 17 73													
REA -0.13 95													
FAT 0.03 79													
ADG 0.19 78													
DMI 1.16 25													
MPP 91 Dam Age: 4/21/17													
ProS HB GM CED BW WW YW MILK ME HPG CEM STAY													
EPD 123 97 27 16 -4.8 47 76 18 -3 12 9 21													
Top 11 2 73 10 8 90 86 96 21 43 20 1													

35 GIEFER JUXTAPOSITION J560													
B	5/7/21		A100% AR		Ratio		Data						
GIEFJ560			4475697		Act. BW	87	66						
BECKTON JULIAN B139 J8													
GIEFER JUXTAPOSITION D5913580565													
GIEFER MEADOWLARK B091													
SC 30.5													
EPD Top%													
MARB 0.37 61													
YG 0.17 94													
BECKTON NEBULA W616 J4													
GIEFER REDBUD A0601646697													
GIEFER LOUP W088													
CW 11 88													
REA -0.26 99													
FAT 0.03 76													
ADG 0.18 78													
DMI 1.23 32													
MPP 101 Dam Age: 5/4/13													
ProS HB GM CED BW WW YW MILK ME HPG CEM STAY													
EPD 107 89 18 18 -4.7 50 79 26 7 12 10 21													
Top 28 4 86 3 8 84 82 44 72 47 8 1													

38 GIEFER JUXTAPOSITION J615													
B	4/21/21		A100% AR		Ratio		Data						
GIEFJ615			4475759		Act. BW	78	57						
BECKTON JULIAN B139 J8													
GIEFER JUXTAPOSITION D5913580565													
GIEFER MEADOWLARK B091													
SC 33													
EPD Top%													
MARB 0.29 80													
YG 0.18 95													
BUF CRK ORION W011													
GIEFER COTTONWOOD E1153826263													
GIEFER COTTONWOOD C058													
CW 7 94													
REA -0.29 99													
FAT 0.04 84													
ADG 0.19 76													
DMI 1.19 28													
MPP 92 Dam Age: 4/17/17													
ProS HB GM CED BW WW YW MILK ME HPG CEM STAY													
EPD 115 105 10 21 -7.3 48 79 27 -7 12 11 21													
Top 19 1 95 1 1 86 83 34 15 37 2 2													

42 GIEFER REDBUD K094													
C	5/1/22		A100% AR		Ratio		Data						
GIEFK094			4677269		Act. BW	84	60						
BUF CRK ORION W011													
GIEFER OCTANT B5151713792													
GIEFER SUNFLOWER Y015													
SC													
EPD Top%													
MARB 0.31 75													
YG 0.16 92													
BECKTON NEBULA W616 J4													
GIEFER REDBUD A0601646697													
GIEFER LOUP W088													
CW 13 86													
REA -0.17 97													
FAT 0.04 84													
ADG 0.19 73													
DMI 1.17 26													
MPP 101 Dam Age: 5/4/13													
ProS HB GM CED BW WW YW MILK ME HPG CEM STAY													
EPD 95 76 18 18 -5.2 51 82 21 5 9 8 21													
Top 46 13 86 4 5 82 80 86 64 89 24 2													



39 GIEFER JUXTAPOSITION J598													
B	5/2/21		A100% AR		Ratio		Data						
GIEFJ598			4475655		Act. BW	102	76						
BECKTON JULIAN B139 J8													
GIEFER JUXTAPOSITION D5913580565													
GIEFER MEADOWLARK B091													
SC 33.5													
EPD Top%													
MARB 0.32 72													
YG 0.15 89													
BUF CRK MEDALLION S347													
GIEFER BUCKEYE X0981401336													
GIEFER BUCKEYE T043													
CW 9 91													
REA -0.24 99													
FAT 0.03 71													
ADG 0.19 77													
DMI 1.27 35													
MPP 100 Dam Age: 4/24/10													
ProS HB GM CED BW WW YW MILK ME HPG CEM STAY													
EPD 120 105 15 16 -3.9 47 77 24 0 15 9 22													
Top 14 1 90 10 16 88 85 67 34 8 17 1													

43 GIEFER GUNSMOKE K134													
C	4/27/22		A100% AR		Ratio		Data						
GIEFK134			4677273		Act. BW	117	84						
LCS Z 6													
GIEFER PARADIGM G5064158232													
GIEFER MISS YO 2006													
SC													
EPD Top%													
MARB 0.3 79													
YG 0.15 89													
BUF CRK ORION W011													
GIEFER GUNSMOKE B0921713824													
GIEFER GUNSMOKE X107													
CW 14 83													
REA -0.14 95													
FAT 0.03 79													
ADG 0.2 69													
DMI 1.23 30													
MPP 102 Dam Age: 5/25/14													
ProS HB GM CED BW WW YW MILK ME HPG CEM STAY													
EPD 103 83 19 14 -3.1 51 83 21 -2 11 8 19													
Top 33 7 85 28 28 82 78 88 23 56 35 6													

45 GIEFER GUNSMOKE K150													
C	5/8/22		A100% AR		Ratio		Data						
GIEFK150			4677325		Act. BW	113	81						
BECKTON NEW ERA D206 E3													
GIEFER NEW EPOCH H5344319965													
GIEFER MISS YO Y034													
SC													
EPD Top%													
MARB 0.22 92													
YG 0.12 78													
GIEFER OCTANT B515													
GIEFER GUNSMOKE E1253826299													
GIEFER GUNSMOKE B092													
CW 7 95													
REA -0.22 98													
FAT 0.02 60													
ADG 0.21 66													
DMI 1.05 19													
MPP 86 Dam Age: 5/3/17													
ProS HB GM CED BW WW YW MILK ME HPG CEM STAY													
EPD 89 79 9 16 -3.5 53 86 22 -6 11 7 19													
Top 57 10 95 13 21 78 74 83 14 58 52 11													

36 GIEFER JUXTAPOSITION J571													
B	4/22/21		A100% AR		Ratio		Data						
GIEFJ571			4475779		Act. BW	102	73						
BECKTON JULIAN B139 J8													
GIEFER JUXTAPOSITION D5913580565													
GIEFER MEADOWLARK B091													
SC 33.5													
EPD Top%													
MARB 0.38 57													
YG 0.19 96													
LCS Z 6													
GIEFER COTTONWOOD F0714075228													
GIEFER MISS YO Z017													
CW 17 73													
REA -0.29 99													
FAT 0.02 61													
ADG 0.2 71													
DMI 1.36 42													
MPP Dam Age: 4/28/18													
ProS HB GM CED BW WW YW MILK ME HPG CEM STAY													
EPD 108 86 22 16 -3.2 54 86 25 3 12 8 20													
Top 27 6 80 12 25 73 73 52 52 42 24 3													

40 GIEFER JUXTAPOSITION J634													
B	5/9/21		A100% AR		Ratio		Data						
GIEFJ634			4475803		Act. BW	97	69						
BECKTON JULIAN B139 J8													
GIEFER JUXTAPOSITION D5913580565													
GIEFER MEADOWLARK B091													
SC 31													
EPD Top%													
MARB 0.42 47													
YG 0.18 96													
LCS Z 6													
GIEFER COTTONWOOD F1344075298													
GIEFER MISS YO A061													
CW 15 79													
REA -0.26 99													
FAT 0.03 72													
ADG 0.19 73													
DMI 1.17 27													
MPP Dam Age: 5/29/18													
ProS HB GM CED BW WW YW MILK ME HPG CEM STAY													
EPD 128 99 29 16 -3.8 51 81 24 -1 13 9 21													
Top 8 1 69 9 17 82 79 66 31 20 12 2													



46 GIEFER AD ASTRA K151													
C	4/26/22		A100% AR		Ratio		Data						
GIEFK151			4677353		Act. BW	70	48						
BECKTON JULIAN B139 J8													
GIEFER JUXTAPOSITION D5913580565													
GIEFER MEADOWLARK B091													
SC													
EPD Top%													
MARB 0.37 61													
YG 0.17 94													
LCS Z 6													
GIEFER AD ASTRA F1274075270													
GIEFER AD ASTRA C042													
CW 14 84													
REA -0.3 99													
FAT 0.02 60													
ADG 0.2 72													
DMI 1.33 37													
MPP 103 Dam Age: 5/6/18													
ProS HB GM CED BW WW YW MILK ME HPG CEM STAY													
EPD 109 90 19 18 -4.8 53 85 27 -3 12 9 19													
Top 24 3 86 4 8 76 75 39 22 36 11 6													



OUR HEIFERS...

OUR HEIFERS...



47 GIEFER REDBUD K153																																																					
C	5/14/22		A100% AR		Ratio		Data																																														
GIEFK153			4677367		Act. BW	98	69																																														
BUF CRK ORION W011 GIEFER OCTANT B5151713792 GIEFER SUNFLOWER Y015																																																					
<table border="1"> <thead> <tr> <th></th> <th>EPD</th> <th>Top%</th> <th colspan="2">Data</th> </tr> </thead> <tbody> <tr> <td>MARB</td> <td>0.26</td> <td>86</td> <td colspan="2"></td> </tr> <tr> <td>YG</td> <td>0.15</td> <td>90</td> <td colspan="2"></td> </tr> <tr> <td>CW</td> <td>7</td> <td>95</td> <td colspan="2"></td> </tr> <tr> <td>REA</td> <td>-0.14</td> <td>95</td> <td colspan="2"></td> </tr> <tr> <td>FAT</td> <td>0.04</td> <td>93</td> <td colspan="2"></td> </tr> <tr> <td>ADG</td> <td>0.19</td> <td>75</td> <td colspan="2">0</td> </tr> <tr> <td>DML</td> <td>1.04</td> <td>18</td> <td colspan="2"></td> </tr> </tbody> </table>															EPD	Top%	Data		MARB	0.26	86			YG	0.15	90			CW	7	95			REA	-0.14	95			FAT	0.04	93			ADG	0.19	75	0		DML	1.04	18		
	EPD	Top%	Data																																																		
MARB	0.26	86																																																			
YG	0.15	90																																																			
CW	7	95																																																			
REA	-0.14	95																																																			
FAT	0.04	93																																																			
ADG	0.19	75	0																																																		
DML	1.04	18																																																			
BECKTON JULIAN B139 J8 GIEFER REDBUD F1414075324 GIEFER REDBUD C084																																																					
MPP Dam Age: 4/27/18																																																					
ProS	HB	GM	CED	BW	WW	YW	MILK	ME	HPG	CEM	STAY																																										
EPD	100	90	11	19	-6.8	49	80	25	-5	11	9	20																																									
Top	37	4	94	1	1	85	82	56	15	53	15	4																																									



Lot 50



Lot 53

56 GIEFER SHAWNEE K132																																																					
C	5/4/22		A100% AR		Ratio		Data																																														
GIEFK132			4677343		Act. BW	98	68																																														
BECKTON NEW ERA D206 E3 GIEFER NEW EPOCH H5344319965 GIEFER MISS YO Y034																																																					
<table border="1"> <thead> <tr> <th></th> <th>EPD</th> <th>Top%</th> <th colspan="2">Data</th> </tr> </thead> <tbody> <tr> <td>MARB</td> <td>0.21</td> <td>93</td> <td colspan="2"></td> </tr> <tr> <td>YG</td> <td>0.1</td> <td>71</td> <td colspan="2"></td> </tr> <tr> <td>CW</td> <td>12</td> <td>88</td> <td colspan="2"></td> </tr> <tr> <td>REA</td> <td>-0.19</td> <td>97</td> <td colspan="2"></td> </tr> <tr> <td>FAT</td> <td>0.01</td> <td>37</td> <td colspan="2"></td> </tr> <tr> <td>ADG</td> <td>0.2</td> <td>73</td> <td colspan="2">0</td> </tr> <tr> <td>DML</td> <td>1.16</td> <td>25</td> <td colspan="2"></td> </tr> </tbody> </table>															EPD	Top%	Data		MARB	0.21	93			YG	0.1	71			CW	12	88			REA	-0.19	97			FAT	0.01	37			ADG	0.2	73	0		DML	1.16	25		
	EPD	Top%	Data																																																		
MARB	0.21	93																																																			
YG	0.1	71																																																			
CW	12	88																																																			
REA	-0.19	97																																																			
FAT	0.01	37																																																			
ADG	0.2	73	0																																																		
DML	1.16	25																																																			
GIEFER OCTANT B515 GIEFER SHAWNEE F0874075252 GIEFER SHAWNEE Z031																																																					
MPP 99 Dam Age: 5/11/18																																																					
ProS	HB	GM	CED	BW	WW	YW	MILK	ME	HPG	CEM	STAY																																										
EPD	86	75	11	17	-4.8	52	83	23	-4	11	7	18																																									
Top	61	14	94	5	8	79	77	75	18	47	44	13																																									



Lot 48

50 GIEFER RUBY SLIPPER K147																																																					
C	4/28/22		A100% AR		Ratio		Data																																														
GIEFK147			4677319		Act. BW	91	64																																														
BECKTON NEW ERA D206 E3 GIEFER NEW EPOCH H5344319965 GIEFER MISS YO Y034																																																					
<table border="1"> <thead> <tr> <th></th> <th>EPD</th> <th>Top%</th> <th colspan="2">Data</th> </tr> </thead> <tbody> <tr> <td>MARB</td> <td>0.23</td> <td>90</td> <td colspan="2"></td> </tr> <tr> <td>YG</td> <td>0.13</td> <td>81</td> <td colspan="2"></td> </tr> <tr> <td>CW</td> <td>3</td> <td>98</td> <td colspan="2"></td> </tr> <tr> <td>REA</td> <td>-0.23</td> <td>99</td> <td colspan="2"></td> </tr> <tr> <td>FAT</td> <td>0.03</td> <td>75</td> <td colspan="2"></td> </tr> <tr> <td>ADG</td> <td>0.19</td> <td>74</td> <td colspan="2">0</td> </tr> <tr> <td>DML</td> <td>1</td> <td>16</td> <td colspan="2"></td> </tr> </tbody> </table>															EPD	Top%	Data		MARB	0.23	90			YG	0.13	81			CW	3	98			REA	-0.23	99			FAT	0.03	75			ADG	0.19	74	0		DML	1	16		
	EPD	Top%	Data																																																		
MARB	0.23	90																																																			
YG	0.13	81																																																			
CW	3	98																																																			
REA	-0.23	99																																																			
FAT	0.03	75																																																			
ADG	0.19	74	0																																																		
DML	1	16																																																			
BECKTON JULIAN B139 J8 GIEFER RUBY SLIPPER E1173826269 GIEFER RUBY SLIPPER Z063																																																					
MPP 100 Dam Age: 5/16/17																																																					
ProS	HB	GM	CED	BW	WW	YW	MILK	ME	HPG	CEM	STAY																																										
EPD	86	81	5	17	-4.1	52	83	26	-4	13	8	18																																									
Top	62	9	97	8	14	80	79	48	18	19	34	16																																									

53 GIEFER SMOKY HILL K149																																																					
C	5/16/22		A100% AR		Ratio		Data																																														
GIEFK149			4677323		Act. BW	106	76																																														
BECKTON NEW ERA D206 E3 GIEFER NEW EPOCH H5344319965 GIEFER MISS YO Y034																																																					
<table border="1"> <thead> <tr> <th></th> <th>EPD</th> <th>Top%</th> <th colspan="2">Data</th> </tr> </thead> <tbody> <tr> <td>MARB</td> <td>0.22</td> <td>92</td> <td colspan="2"></td> </tr> <tr> <td>YG</td> <td>0.12</td> <td>80</td> <td colspan="2"></td> </tr> <tr> <td>CW</td> <td>4</td> <td>97</td> <td colspan="2"></td> </tr> <tr> <td>REA</td> <td>-0.25</td> <td>99</td> <td colspan="2"></td> </tr> <tr> <td>FAT</td> <td>0.03</td> <td>69</td> <td colspan="2"></td> </tr> <tr> <td>ADG</td> <td>0.19</td> <td>75</td> <td colspan="2">0</td> </tr> <tr> <td>DML</td> <td>0.91</td> <td>13</td> <td colspan="2"></td> </tr> </tbody> </table>															EPD	Top%	Data		MARB	0.22	92			YG	0.12	80			CW	4	97			REA	-0.25	99			FAT	0.03	69			ADG	0.19	75	0		DML	0.91	13		
	EPD	Top%	Data																																																		
MARB	0.22	92																																																			
YG	0.12	80																																																			
CW	4	97																																																			
REA	-0.25	99																																																			
FAT	0.03	69																																																			
ADG	0.19	75	0																																																		
DML	0.91	13																																																			
BECKTON JULIAN B139 J8 GIEFER SMOKY HILL E1223826285 GIEFER SMOKY HILL B077																																																					
MPP 100 Dam Age: 4/27/17																																																					
ProS	HB	GM	CED	BW	WW	YW	MILK	ME	HPG	CEM	STAY																																										
EPD	82	77	5	16	-3.6	52	83	25	-4	12	7	18																																									
Top	68	12	97	13	19	78	78	52	19	43	51	13																																									

57 GIEFER SHAWNEE K004																																																					
C	4/30/22		A100% AR		Ratio		Data																																														
GIEFK004			4677251		Act. BW	112	79																																														
LCS Z 6 GIEFER PARADIGM G5064158232 GIEFER MISS YO Z006																																																					
<table border="1"> <thead> <tr> <th></th> <th>EPD</th> <th>Top%</th> <th colspan="2">Data</th> </tr> </thead> <tbody> <tr> <td>MARB</td> <td>0.34</td> <td>68</td> <td colspan="2"></td> </tr> <tr> <td>YG</td> <td>0.14</td> <td>87</td> <td colspan="2"></td> </tr> <tr> <td>CW</td> <td>17</td> <td>73</td> <td colspan="2"></td> </tr> <tr> <td>REA</td> <td>-0.16</td> <td>96</td> <td colspan="2"></td> </tr> <tr> <td>FAT</td> <td>0.02</td> <td>63</td> <td colspan="2"></td> </tr> <tr> <td>ADG</td> <td>0.17</td> <td>85</td> <td colspan="2">0</td> </tr> <tr> <td>DML</td> <td>1.2</td> <td>28</td> <td colspan="2"></td> </tr> </tbody> </table>															EPD	Top%	Data		MARB	0.34	68			YG	0.14	87			CW	17	73			REA	-0.16	96			FAT	0.02	63			ADG	0.17	85	0		DML	1.2	28		
	EPD	Top%	Data																																																		
MARB	0.34	68																																																			
YG	0.14	87																																																			
CW	17	73																																																			
REA	-0.16	96																																																			
FAT	0.02	63																																																			
ADG	0.17	85	0																																																		
DML	1.2	28																																																			
BUF CRK MEDALLION S347 GIEFER SHAWNEE Z0021551877 GIEFER MISS PRISY P007																																																					
MPP 108 Dam Age: 4/21/12																																																					
ProS	HB	GM	CED	BW	WW	YW	MILK	ME	HPG	CEM	STAY																																										
EPD	109	87	21	14	-3	50	77	19	-2	11	7	20																																									
Top	25	5	82	34	29	84	86	95	23	53	46	3																																									

48 GIEFER COTTONWOOD K155																																																					
C	4/17/22		A100% AR		Ratio		Data																																														
GIEFK155			4677373		Act. BW	74	49																																														
BUF CRK THE RIGHT KIND U199 5L INDEPENDENCE 560-298Y1450309 5L BLACK ADINA 525-560																																																					
<table border="1"> <thead> <tr> <th></th> <th>EPD</th> <th>Top%</th> <th colspan="2">Data</th> </tr> </thead> <tbody> <tr> <td>MARB</td> <td>0.53</td> <td>24</td> <td colspan="2"></td> </tr> <tr> <td>YG</td> <td>0.08</td> <td>58</td> <td colspan="2"></td> </tr> <tr> <td>CW</td> <td>10</td> <td>90</td> <td colspan="2"></td> </tr> <tr> <td>REA</td> <td>-0.14</td> <td>95</td> <td colspan="2"></td> </tr> <tr> <td>FAT</td> <td>0.01</td> <td>34</td> <td colspan="2"></td> </tr> <tr> <td>ADG</td> <td>0.22</td> <td>58</td> <td colspan="2">0</td> </tr> <tr> <td>DML</td> <td>1.27</td> <td>33</td> <td colspan="2"></td> </tr> </tbody> </table>															EPD	Top%	Data		MARB	0.53	24			YG	0.08	58			CW	10	90			REA	-0.14	95			FAT	0.01	34			ADG	0.22	58	0		DML	1.27	33		
	EPD	Top%	Data																																																		
MARB	0.53	24																																																			
YG	0.08	58																																																			
CW	10	90																																																			
REA	-0.14	95																																																			
FAT	0.01	34																																																			
ADG	0.22	58	0																																																		
DML	1.27	33																																																			
BECKTON JULIAN B139 J8 GIEFER COTTONWOOD G1674158202 GIEFER MISS YO A061																																																					
MPP Dam Age: 4/21/19																																																					
ProS	HB	GM	CED	BW	WW	YW	MILK	ME	HPG	CEM	STAY																																										
EPD	86	51	35	17	-4.8	57	92	24	3	13	8	14																																									
Top	62	58	56	7	7	64	62	61	48	16	27	68																																									

51 GIEFER PATRIOT'S LADY K152																																																					
C	5/14/22		A100% AR		Ratio		Data																																														
GIEFK152			4677361		Act. BW	120	84																																														
BECKTON NEW ERA D206 E3 GIEFER NEW EPOCH H5344319965 GIEFER MISS YO Y034																																																					
<table border="1"> <thead> <tr> <th></th> <th>EPD</th> <th>Top%</th> <th colspan="2">Data</th> </tr> </thead> <tbody> <tr> <td>MARB</td> <td>0.34</td> <td>68</td> <td colspan="2"></td> </tr> <tr> <td>YG</td> <td>0.14</td> <td>85</td> <td colspan="2"></td> </tr> <tr> <td>CW</td> <td>14</td> <td>83</td> <td colspan="2"></td> </tr> <tr> <td>REA</td> <td>-0.22</td> <td>98</td> <td colspan="2"></td> </tr> <tr> <td>FAT</td> <td>0.02</td> <td>50</td> <td colspan="2"></td> </tr> <tr> <td>ADG</td> <td>0.21</td> <td>65</td> <td colspan="2">0</td> </tr> <tr> <td>DML</td> <td>1.23</td> <td>30</td> <td colspan="2"></td> </tr> </tbody> </table>															EPD	Top%	Data		MARB	0.34	68			YG	0.14	85			CW	14	83			REA	-0.22	98			FAT	0.02	50			ADG	0.21	65	0		DML	1.23	30		
	EPD	Top%	Data																																																		
MARB	0.34	68																																																			
YG	0.14	85																																																			
CW	14	83																																																			
REA	-0.22	98																																																			
FAT	0.02	50																																																			
ADG	0.21	65	0																																																		
DML	1.23	30																																																			
LCS Z 6 GIEFER PATRIOT'S LADY F1364075306 GIEFER PATRIOT'S LADY C067																																																					
MPP Dam Age: 5/2/18																																																					
ProS	HB	GM	CED	BW	WW	YW	MILK	ME	HPG	CEM	STAY																																										
EPD	89	67	22	14	-1.9	55	88	22	-2	12	7	17																																									
Top	56	26	81	36	50	71	69	82	22	40	61	30																																									

54 GIEFER SHAWNEE K154																																																					
C	5/6/22		A100% AR		Ratio		Data																																														
GIEFK154			4677371		Act. BW	106	74																																														
BECKTON NEW ERA D206 E3 GIEFER NEW EPOCH H5344319965 GIEFER MISS YO Y034																																																					
<table border="1"> <thead> <tr> <th></th> <th>EPD</th> <th>Top%</th> <th colspan="2">Data</th> </tr> </thead> <tbody> <tr> <td>MARB</td> <td>0.28</td> <td>83</td> <td colspan="2"></td> </tr> <tr> <td>YG</td> <td>0.14</td> <td>86</td> <td colspan="2"></td> </tr> <tr> <td>CW</td> <td>10</td> <td>91</td> <td colspan="2"></td> </tr> <tr> <td>REA</td> <td>-0.27</td> <td>99</td> <td colspan="2"></td> </tr> <tr> <td>FAT</td> <td>0.02</td> <td>47</td> <td colspan="2"></td> </tr> <tr> <td>ADG</td> <td>0.19</td> <td>77</td> <td colspan="2">0</td> </tr> <tr> <td>DML</td> <td>1.02</td> <td>17</td> <td colspan="2"></td> </tr> </tbody> </table>															EPD	Top%	Data		MARB	0.28	83			YG	0.14	86			CW	10	91			REA	-0.27	99			FAT	0.02	47			ADG	0.19	77	0		DML	1.02	17		
	EPD	Top%	Data																																																		
MARB	0.28	83																																																			
YG	0.14	86																																																			
CW	10	91																																																			
REA	-0.27	99																																																			
FAT	0.02	47																																																			
ADG	0.19	77	0																																																		
DML	1.02	17																																																			
GIEFER OCTANT B515 GIEFER SHAWNEE F1444075336 GIEFER SHAWNEE C104																																																					
MPP Dam Age: 5/3/18																																																					
ProS	HB	GM	CED	BW	WW	YW	MILK	ME	HPG	CEM	STAY																																										
EPD	91	75	15	16	-3.8	50	80	19	-7	11	7	18																																									
Top	53	14	90	13	17	84	82	95	13	54	58	14																																									



Lot 58

49 GIEFER COTTONWOOD K128																																																					
C	4/29/22		A100% AR		Ratio		Data																																														
GIEFK128			4677279		Act. BW	116	83																																														
BECKTON JULIAN B139 J8 GIEFER JUXTAPOSITION D5913580565 GIEFER MEADOWLARK B091																																																					
<table border="1"> <thead> <tr> <th></th> <th>EPD</th> <th>Top%</th> <th colspan="2">Data</th> </tr> </thead> <tbody> <tr> <td>MARB</td> <td>0.42</td> <td>48</td> <td colspan="2"></td> </tr> <tr> <td>YG</td> <td>0.16</td> <td>93</td> <td colspan="2"></td> </tr> <tr> <td>CW</td> <td>11</td> <td>89</td> <td colspan="2"></td> </tr> <tr> <td>REA</td> <td>-0.24</td> <td>99</td> <td colspan="2"></td> </tr> <tr> <td>FAT</td> <td>0.03</td> <td>79</td> <td colspan="2"></td> </tr> <tr> <td>ADG</td> <td>0.19</td> <td>76</td> <td colspan="2">0</td> </tr> <tr> <td>DML</td> <td>1.16</td> <td>25</td> <td colspan="2"></td> </tr> </tbody> </table>															EPD	Top%	Data		MARB	0.42	48			YG	0.16	93			CW	11	89			REA	-0.24	99			FAT	0.03	79			ADG	0.19	76	0		DML	1.16	25		
	EPD	Top%	Data																																																		
MARB	0.42	48																																																			
YG	0.16	93																																																			
CW	11	89																																																			
REA	-0.24	99																																																			
FAT	0.03	79																																																			
ADG	0.19	76	0																																																		
DML	1.16	25																																																			
ANDRAS IN FOCUS 1158 GIEFER COTTONWOOD C0833505679 GIEFER MISS YO A040																																																					
MPP 101 Dam Age: 6/1/15																																																					
ProS	HB	GM	CED	BW	WW	YW	MILK	ME	HPG	CEM	STAY																																										
EPD	131	106	24	16	-3.3	50	81	23	0	15	8	22																																									
Top	6	1	77	10	24	83	81	75	30	5	24	1																																									

52 GIEFER SHAWNEE K054																																																					
C	5/1/22		A100% AR		Ratio		Data																																														
GIEFK054			4677277		Act. BW	95	68																																														
BECKTON JULIAN B139 J8 GIEFER JUXTAPOSITION D5913580565 GIEFER MEADOWLARK B091																																																					
<table border="1"> <thead> <tr> <th></th> <th>EPD</th> <th>Top%</th> <th colspan="2">Data</th> </tr> </thead> <tbody> <tr> <td>MARB</td> <td>0.43</td> <td>47</td> <td colspan="2"></td> </tr> <tr> <td>YG</td> <td>0.16</td> <td>92</td> <td colspan="2"></td> </tr> <tr> <td>CW</td> <td>14</td> <td>83</td> <td colspan="2"></td> </tr> <tr> <td>REA</td> <td>-0.2</td> <td>98</td> <td colspan="2"></td> </tr> <tr> <td>FAT</td> <td>0.03</td> <td>78</td> <td colspan="2"></td> </tr> <tr> <td>ADG</td> <td>0.2</td> <td>71</td> <td colspan="2">0</td> </tr> <tr> <td>DML</td> <td>1.24</td> <td>30</td> <td colspan="2"></td> </tr> </tbody> </table>															EPD	Top%	Data		MARB	0.43	47			YG	0.16	92			CW	14	83			REA	-0.2	98			FAT	0.03	78			ADG	0.2	71	0		DML	1.24	30		
	EPD	Top%	Data																																																		
MARB	0.43	47																																																			
YG	0.16	92																																																			
CW	14	83																																																			
REA	-0.2	98																																																			
FAT	0.03	78																																																			
ADG	0.2	71	0																																																		
DML	1.24	30																																																			
ANDRAS IN FOCUS 1158 GIEFER SHAWNEE C0433505672 GIEFER SHAWNEE Y012																																																					
MPP 104 Dam Age: 4/24/15																																																					
ProS	HB	GM	CED	BW	WW	YW	MILK	ME	HPG	CEM	STAY																																										
EPD	129	103	26	17	-3.7	54	86	24	3	16	9	21																																									
Top	7	1	75	7	19	73	73	61	51	3	19	1																																									

55 GIEFER CHEYENNE K017																																																					
C	4/28/22		A100% AR		Ratio		Data																																														
GIEFK017			4677297		Act. BW	105	75																																														
BECKTON NEW ERA D206 E3 GIEFER NEW EPOCH H5344319965 GIEFER MISS YO Y034																																																					
<table border="1"> <thead> <tr> <th></th> <th>EPD</th> <th>Top%</th> <th colspan="2">Data</th> </tr> </thead> <tbody> <tr> <td>MARB</td> <td>0.37</td> <td>61</td> <td colspan="2"></td> </tr> <tr> <td>YG</td> <td>0.11</td> <td>75</td> <td colspan="2"></td> </tr> <tr> <td>CW</td> <td>11</td> <td>89</td> <td colspan="2"></td> </tr> <tr> <td>REA</td> <td>-0.16</td> <td>96</td> <td colspan="2"></td> </tr> <tr> <td>FAT</td> <td>0.02</td> <td>57</td> <td colspan="2"></td> </tr> <tr> <td>ADG</td> <td>0.2</td> <td>69</td> <td colspan="2">0</td> </tr> <tr> <td>DML</td> <td>1.02</td> <td>17</td> <td colspan="2"></td> </tr> </tbody> </table>															EPD	Top%	Data		MARB	0.37	61			YG	0.11	75			CW	11	89			REA	-0.16	96			FAT	0.02	57			ADG	0.2	69	0		DML	1.02	17		
	EPD	Top%	Data																																																		
MARB	0.37	61																																																			
YG	0.11	75																																																			
CW	11	89																																																			
REA	-0.16	96																																																			
FAT	0.02	57																																																			
ADG	0.2	69	0																																																		
DML	1.02	17																																																			
ANDRAS IN FOCUS 1158 GIEFER CHEYENNE D0263580547 GIEFER CHEYENNE A019																																																					
MPP 105 Dam Age: 4/26/16																																																					
ProS	HB	GM	CED	BW	WW	YW	MILK	ME	HPG	CEM	STAY																																										
EPD	104	78	26	15	-2.8	51	84	22	-2	14	7	18	</																																								

OUR HEIFERS...



Lot 59

62 GIEFER COTTONWOOD K037													
C	4/1/22	A100% AR				Ratio		Data					
GIEFK037		4677289				Act. BW	102	73					
BECKTON JULIAN B139 J8													
GIEFER JUXTAPOSITION D5913580565													
GIEFER MEADOWLARK B091													
LCS Z 6													
GIEFER COTTONWOOD C0383505732													
GIEFER MISS YO A007													
MPP 101 Dam Age: 4/30/15													
EPD 107 83 24 17 -4.3 53 84 27 6 12 9 20													
Top 27 7 79 6 12 77 76 32 69 43 13 3													

59 GIEFER COTTONWOOD K030													
C	4/20/22	A100% AR				Ratio		Data					
GIEFK030		4677375				Act. BW	96	65					
BUE CRK ORION W011													
GIEFER OCTANT B5151713792													
GIEFER SUNFLOWER Y015													
EPD 93 82 11 20 -7.1 52 85 24 -6 10 8 20													
Top 49 8 94 1 1 78 74 66 14 80 25 5													

63 GIEFER GUNSMOKE K124													
C	4/30/22	A100% AR				Ratio		Data					
GIEFK124		4677293				Act. BW	92	66					
LCS Z 6													
GIEFER PARADIGM G5064158232													
GIEFER MISS YO Z006													
EPD 118 97 21 15 -4.2 49 76 24 -8 12 8 20													
Top 15 2 83 15 13 86 86 67 12 29 26 5													

60 GIEFER SUNFLOWER K098													
C	4/20/22	A100% AR				Ratio		Data					
GIEFK098		4677303				Act. BW	92	65					
BECKTON JULIAN B139 J8													
GIEFER JUXTAPOSITION D5913580565													
GIEFER MEADOWLARK B091													
EPD 120 96 24 16 -3.8 54 85 22 -1 13 8 21													
Top 13 2 78 13 17 74 74 78 25 28 35 1													

64 GIEFER COTTONWOOD K148													
C	4/14/22	A100% AR				Ratio		Data					
GIEFK148		4677327				Act. BW	108	76					
BECKTON JULIAN B139 J8													
GIEFER JUXTAPOSITION D5913580565													
GIEFER MEADOWLARK B091													
EPD 132 107 25 15 -3.2 55 87 27 -4 14 9 21													
Top 6 1 76 15 26 72 72 39 17 14 17 1													

61 GIEFER PATRIOT'S LADY K145													
C	4/30/22	A100% AR				Ratio		Data					
GIEFK145		4677313				Act. BW	137	97					
BECKTON JULIAN B139 J8													
GIEFER JUXTAPOSITION D5913580565													
GIEFER MEADOWLARK B091													
EPD 114 90 25 14 -1.5 57 90 24 3 12 8 21													
Top 18 4 76 35 57 65 66 65 48 42 26 3													

65 GIEFER COTTONWOOD K109													
C	4/30/22	A100% AR				Ratio		Data					
GIEFK109		4677275				Act. BW	112	80					
BECKTON JULIAN B139 J8													
GIEFER JUXTAPOSITION D5913580565													
GIEFER MEADOWLARK B091													
EPD 100 87 13 15 -3.3 58 92 27 -2 12 6 20													
Top 37 5 92 19 23 60 61 34 23 33 68 3													

SALE TERMS AND CONDITIONS...

TERMS: Terms of the sale are cash, check, or other terms agreed to in writing between seller and buyer, payable immediately upon conclusion of the sale before animals will be moved. Seller reserves the right to require a certified check as settlement before releasing any livestock.

PURCHASER'S RISK: All animals are the owner's risk prior to their sale and become property of the purchaser as soon as declared sold by the auctioneer.

BIDDING: Any disputes or challenges regarding bids or tie bids will be settled by the auctioneer and the auctioneer's decision will be final.

CERTIFICATE OF REGISTRY: A certificate of registry for all cattle will be transferred to the buyer at the seller's expense.

ANNOUNCEMENTS: Any errors or changes in information contained in the catalog will be announced from the block and such announcements will take precedence over the information contained herein.

HEALTH: All animals are eligible for interstate shipment. Interstate health papers prepared by an accredited veterinarian can be furnished on each animal sold. All efforts for the exportation of livestock can be arranged through the seller.

LIABILITIES: All persons who attend the sale do so at their own risk. The seller and auction facility assume no liability for any accidents that may occur. Neither does the seller or auction facility assume liability for the loss or injury to livestock due to theft, mysterious disappearance, sickness, improper handling, or Act of God. Any legal action that may in exceptional cases be taken must be between the buyer and the seller. This catalog has been prepared by the seller from pedigrees and information supplied by sources deemed reliable; however, the seller will in no way guarantee the pedigree, percentages of the animal selling, or data included in this catalog. Any exceptions taken are between the buyer and the seller.

CONTRACT: The above terms and conditions of sale constitute a contract between the buyer and seller of each animal and are equally binding upon both. Each sale or resale of an animal constitutes a separate transaction.

PHONE BIDS: Telephone bids may be taken by the auctioneer or the sellers.

Join us December 7, 2023, for our next annual sale! Look for updates at

www.GieferRanch.com

**TIME DATED MATERIAL
DO NOT DELAY!!**



GIEFER RANCH

WaKeeney, Kansas

**Purebred Red Angus Cattle
Registered Quarter Horses**

**Bernie and Nishi (DVM) Giefer and Bernard, Helen, Sybil & Wyndom
1004 Easter Avenue • WaKeeney, Kansas 67672
785-743-2498 • www.GieferRanch.com**

Annual Sale

December 8, 2022

12 O'Clock Noon CDT

WaKeeney Livestock, LLC

WaKeeney, Kansas