



**GIEFER RANCH**  
**WaKeeney, Kansas**  
**Purebred Red Angus Cattle**  
**Registered Quarter Horses**

*OUR HOME ON THE RANGE OF THE GREAT AMERICAN PLAINS*  
*YOUR SOURCE FOR PRAIRIE-PROVEN PERFORMANCE*

**27 LONG YEARLING RED ANGUS BULLS**  
**32 WEANLING RED ANGUS HEIFERS**  
**2 WEANLING QUARTER HORSE FOALS**

**12 O'CLOCK NOON CST**  
**DECEMBER 12, 2019**



**Gilchrist Auction Co.**

**Kyle Gilchrist: 641/919-1077**

14075 120th St. • Douds, IA 52551

redcowseller@yahoo.com



**WA KEENEY (KANSAS) LIVESTOCK LLC**

**BERNIE, NISHI (DVM), BERNARD, HELEN, SYBIL & WYNDOM**  
**HOME: 785-743-2498 • BERNIE GIEFER: 785-635-5036 • NISHI GIEFER: 785-814-0004**

**WWW.GIEFERRANCH.COM**

## INTRODUCTION...

To our many repeat buyers, thank you for your continued patronage. To those considering our sale for the first time, thank you for your willingness to introduce Giefer Red Angus genetics into your herd.

This sale marks a significant change in our approach. For over twenty years, we've raised kids, Red Angus cattle, and Quarter Horses. The kids are leaving the fold, but we're still offering the same—even better—quality cattle and horses. Prompted mostly by small numbers of 2017 bull calves, we decided this would be the year to move our sale to December, as we had always intended. We hope the second Thursday in December will be an annual “don't miss” entry on your calendar.

Our sale format is going to change a bit, too. Just as we have never shaved or torched cattle, we have also decided to dispense with ring men. (We will still serve lunch!) Additionally, cattle prices will be floored by the sale barn if not by active bidders. Everything sells.

We'd like to think we have learned a thing or two after being in the purebred business for over two decades. Years ago, acting on a research article, we imposed a 42-day breeding season on our cows in the belief it would lead to an improvement in herd fertility; open (and supposedly less fertile) cows were culled. Recent research now indicates that, rather randomly, a fertile cow mated to a fertile bull leads to pregnancy 70% of the time. That means that over the course of a cows' 21-day cycle, you'd expect 70% of fertile, well-fed cows and heifers to become pregnant and stay pregnant, after two cycles 91%, after three cycles 96-97%, and so on. This is consistent with our findings. Based on these data, we have added a few days to the bulls' work schedules. Pregnancy rates have increased as predicted.

Another thing we've verified is the old saying, “The eye of the master fattens the stock.” With the help of nutrition “experts”, we developed a grain ration which included substantial quantities of dried distiller's grains (DDGs). For two years, we observed poorer than expected growth and thriftiness. After talking with a former Kansas State University nutritionist, we learned that researchers now believe that the distillation process may be extracting some unidentified nutrient. Reducing the DDGs in our ration has improved gains and overall health of our cattle.

Lesson learned: beware of the research. Sometimes it is fake news!

Another reason for moving the sale is, admittedly, we aren't getting any younger. Winter feeding chores will be more manageable for us as our kids drift off to college and beyond. December also falls between cross country and track seasons, as opposed to our former sale date smack into the midst of the track season! As many of you know, our kids have distinguished themselves as distance runners. All four have won high school league championships and state medals, including three state championships. Bernard continues to run for pleasure as he studies mass communications at Kansas State University. Helen is a member of the K-State cross country and track teams while pursuing a degree in livestock nutrition. Sybil and Wyndom hope to follow in the footsteps of their big sis, and continue their competitive running careers in college. A December sale frees us up to travel to distant collegiate meets.

For you, a December sale presents an opportunity we cherished when we first started building a purebred herd: the ability to acquire age-advantaged bulls and very young heifers. One of the greatest health issues presented to breeders who sell yearling bulls is getting those bulls mature enough to pass a breeding soundness exam, yet avoiding stress to the skeletal system and deposition of fat in the scrotum. We preferred to purchase long-yearling bulls and young heifers because they had time to fully integrate into our herd, under our conditions, well in advance of breeding. This has allowed us to offer you stock out of easy-keeping cows that thrive in our High Plains conditions. All of the cattle featured in this sale have been raised entirely on our ranch.

Our breeding emphasis will continue to prioritize calving ease, extended stayability, low maintenance energy requirements and – most importantly – good disposition. No one has time to be laid up, and no one deserves to be run over for simply tagging a calf or checking a water tank!

O come O come to our sale! We look forward to seeing you.

Merry Christmas!

**AUCTIONEER:**

Kyle Gilchrist: 641-919-1077

**SALE DAY PHONES:**

Kyle Gilchrist: 641-919-1077

Sale Barn: 785-743-2691

Bernie: 785-635-5036

Nishi: 785-814-0004

**SALE LOCATION:**

WaKeeney Livestock LLC

First Street and North Railroad Avenue

Owner Kyle Zimmerman: 785-675-9031

**DIRECTIONS TO WAKEENEY****LIVESTOCK, LLC:**

From I-70 Exit 127 (west exit), go north on First Street. Salebarn is on the left, just over the railroad tracks.

**CATALOG BY:**

Helen Giefer, helen@giefferranch.com

**SALE VETERINARIANS:**

Nishi Giefer, DVM; Nicholas P. Schroeder, DVM, MS

**SALE DAY LUNCH:**

Courtesy of Giefer Ranch, by the WaKeeney Livestock LLC Cafe, operated by Sherry Kuntz.

**DELIVERY:**

Sales aggregating over \$5,000 will be shipped free of charge to a common address within 300 miles.

Delivery beyond that point will be at cost.

**DISCOUNT:**

Sales aggregating over \$5,000 will be discounted \$250 if picked up day of sale.

*View this catalog online at [GieferRanch.com](http://GieferRanch.com) and [www.redcows.net](http://www.redcows.net)*

**OUR TEAM. . .**

While ranching is a huge part of our lives, we are not only about livestock, hay, and fencing. The past year witnessed some changes in our crew. Windell Clark, who has spent his Saturdays helping us for years, moved to be closer to his kids in Colorado. We also saw two good friends and sale day helpers—Jan Burkhard and Kendall Ottley—move on to the big range in the sky.

We still enjoy the support of Rick & Jeremiah Burbach, David Hille, George Waldschmidt, Marilyn Schneider, Sherry Kuntz and her staff, and Sandy Burkhard. Sandy comes all the way from Ohio to give us a hand before and during the sale. Nicholas P. Schroeder, DVM, MS, fondly known as Dr. Nick on our spread, is a retired veterinarian, Red Angus breeder, and good friend who helps us more than we know.

In summer, our crew includes “The Nephews” (and Nieces) who have come from Eastern Kansas, Wyoming, and Colorado to toil at Ranch Boot Camp. Thanks Ashley, Evan, Collin, Carter, Taylor, Isaak, Holden, and “adopted” nephew Dalton. And we can’t forget the Master House Painter, Courtney.

No Sundays west of Omaha. Right, Guys?

THANK YOU ALL!

**IN MEMORIAM. . .**

Since our first public auction, long-time family friend Jan Burkhard has been part of the sale. Coming all the way from Ohio, he and his wife Sandy jumped in to do whatever needed doing. From brushing bulls in the wind (they invested in some good quality goggles and face masks) to hauling critters to the salebarn, to pushing critters to the sale ring, to doing chores while we were occupied elsewhere, to making deliveries after the gavel fell, they were game to get ‘er done. To our great fortune, Sandy will be joining us this year doing all of the above plus manning the cookie and book table.

Jan, you will be sorely missed. Godspeed, good friend.



## OUR PHILOSOPHY...

We recognize that there is no “one size fits all” when it comes to seedstock. Because of this, we believe it is very important that you understand the approaches we take in our breeding program. We believe the cattle we have available for sale will work very well for many – but certainly not for all. We don’t want to simply make a sale – we want satisfied customers. It is for this reason that in the following pages, we have tried to do more than just describe the animals we have in this year’s offering.

## OUR FOCUS...

We began our purebred Red Angus herd in 1999 with the purchase of a bull and heifer. It is from that nucleus that our herd has been developed. We purchased some cows thereafter, but have maintained a closed cowherd since 2002.

Our initial focus was developing sound cattle capable of surviving and thriving on the often limited inputs available on the High Plains. Selection pressure was initially applied to produce cattle with calving ease

## OUR COWS...

Our cows are bred to calve starting May 1, when pasture (generally) begins the summer growing season. We inevitably have early calvers, so for all practical purposes our cows begin calving around April 20. There are several reasons for selecting this time of year. First, daylight lasts longer to facilitate checking cattle. Second, the weather is usually kinder (although we will long remember the late-April blizzard of 2017) for weighing and tagging newborns. Third, by calving on clean grass, we virtually eliminate the prospect of calf scours. Finally, our grasses are at greatest production in mid-June—six weeks after calving. That is key because it is then that the cow is at peak lactation and resuming her estrous cycle. In other words, she is at the highest nutritional demand of her year, and we try to pair that with the most optimal nutritional inputs.

As our cows calve, they are transported with their calves to what will be the cows’ breeding pastures. We maintain separate breeding pastures for each of our herd bulls. We turn our bulls out July 18 – no exceptions; the day is an eagerly anticipated holiday on the Giefer Ranch! We retrieve our bulls in early September, which results in about a 50-day exposure for each cow. In 2016, we began an artificial insemination program for heifers.

We generally strive to wean calves in early October. At the time of weaning, they are fairly young – some just older than 100 days. We practice fence line weaning when feasible.

Our cows remain on pasture until late November. They are then collected and weighed, assessed a body condition score, hip height measured, dewormed, boosted (with clostridials [such as tetanus and blackleg] and virals [BVD, BRSV, PI3, IBR], vibrio, and leptospirosis), and pregnancy checked. Our cows are shortly thereafter moved to their winter pasture, where stockpiled pasture awaits, and where they stay until just prior to calving season. Except in the rare instance of ice or very heavy snowfall, we avoid forage supplementation until mid-February, and we regularly evaluate the cows’ body condition scores. Over the years we have aggressively culled cows that did not appropriately maintain body weight during the winter, the result of which is a cow herd well suited for a winter of limited inputs.

## OUR AGE ADVANTAGED BULLS...

After separation from their dams, our bulls move into a sizeable trap where they have room to roam and exercise. They are wintered on a ration of grain and free choice hay and spend the next summer on pasture and/or drylot, as conditions warrant.



## A NOTE ON TRICHOMONIASIS TESTING

The Kansas Department of Agriculture's Division of Animal Health has approved Giefer Ranch's Trichomoniasis Herd Management Plan. To gain this certification, we submitted information regarding our fences, herd movements, individual identification, and the virgin status of our sale bulls (we do not lease any bulls). By granting this status, the State allows us to market and ship (within Kansas) any bulls under 24 months of age without testing for Trichomoniasis.

Trichomoniasis is a sexually transmitted cattle disease that causes early term abortion in cows. These abortions occur early enough in pregnancy that the fetus is generally resorbed rather than expelled, so the dead fetus will not likely be found. The cow may become pregnant again later in the breeding season. Often the first sign of infection in the herd is a large number of late and open cows at preg-checking time.

Though the cow can clear the infection, a bull cannot. The protozoa that cause trichomoniasis "hide" in the many folds inside the bull's penile sheath and are impossible to fully eliminate. The only "cure" for trichomoniasis in a bull is slaughter.

Testing a bull for trichomoniasis involves sampling the smegma found in the penile sheath. Conducting the test does incur some risk of damage to the sheath and penis. Because of this we have elected against routinely testing sale bulls. However, if you require a trichomoniasis test to ship outside Kansas, or if you are within Kansas and desire your bull purchase(s) tested, please allow us a couple weeks after the sale to complete the testing. We will test and board your bull(s) free of charge and will honor the day-of-sale pickup discount if you pick up your purchase(s) within two weeks of the sale.

## OUR GUARANTEE...

All bulls selling have passed a Breeding Soundness Examination within one month of sale. It is recommended that bulls be re-tested 4-6 weeks prior to breeding season. Bulls selling for \$4,000 or more are guaranteed through the first breeding season.

We strive to insure that all bulls we sell are sound breeders. However, as with any biological creature, deviations from expectations occur. We recognize that aberrations, although rare, are nonetheless part of the livestock industry. Therefore, we extend this breeding guarantee to purchasers of our bulls as a means of redressing those rare instances in which breeding expectations are not met.

1. All bulls sold are guaranteed to be breeders, with the exception of:
  - a. Bulls shown after sale by or with the permission of Buyer; in this instance, the breeding guarantee, if any, shall be as agreed upon between us and Buyer.
  - b. Negligence or willful misconduct on the part of Buyer.
  - c. Any bull shall be considered a breeder if it:
    - (1) Settles one-third or more of the healthy cows he serves; or
    - (2) Is the sire of 20 or more calves; or
    - (3) Settles cows by natural service and passes a fertility test made by a competent veterinarian during any six-month period of trial.
2. All claims for refund must be delivered by Buyer to us in writing prior to January 1, 2021.
3. If any bull is claimed to be a non-breeder, then the bull must be returned to us in good condition and complying with Kansas health requirements. We shall be entitled to three (3) months trial following the return of the bull in which to prove the bull is a breeder. If at the end of three (3) months we are unable to prove the bull is a breeder, then we shall refund to Buyer the purchase price, which shall be deemed full satisfaction and settlement. Any expenses incurred for transporting a bull claimed to be a non-breeder shall be the responsibility of Buyer. If we prove the bull to be a breeder, then it shall be the obligation of Buyer to take delivery of the bull and pay all expenses incurred for transportation.

THIS IS A BREEDING GUARANTEE ONLY.  
THIS GUARANTEE DOES NOT EXTEND TO INJURY, ILLNESS, OR DEATH.  
INSURANCE FOR INJURY, ILLNESS, OR DEATH IS RECOMMENDED.

# PROGENY OF LCS Z 6...

## 1 GIEFER PARAMOUNT F502

<b>BULL</b> GIEFF502	4/26/18	A100% AR 4075204	<b>Ratio Data</b>								
BECKTON NEBULA P P707 BROWN PARAMOUNT X7879 BROWN MS DESTINATION T7664			Act. BW	109 83							
LCS Z 61542264			Adj. WW	116 552							
G A R GAME ON LCS 915 HXC 541R			<b>EPD Top% Data</b>								
BUF CRK MEDALLION N328 BUF CRK MEDALLION S347 BUF CRK REDPRIDE 6089			MARB	0.51 31							
GIEFER SHAWNEE Z0021551877			YG	0.2 94							
LONK DISCOVERY K122			CW	23 48							
GIEFER MISS PRISSY P007			REA	-0.16 93							
LONK SHAWNEE J962			FAT	0.04 72							
MPPA: 107 Dam Age: 4/21/12											
<b>EPD</b>	HB	GM	CED	BW	WW	YW	MILK	ME	HPG	CEM	STAY
<b>Top%</b>	182	48	12	-0.6	63	95	16	0	10	6	18
	36	68	61	68	25	38	93	47	68	70	23



## 2 GIEFER PARAMOUNT F513

<b>BULL</b> GIEFF513	4/20/18	A100% AR 4075222	<b>Ratio Data</b>								
BECKTON NEBULA P P707 BROWN PARAMOUNT X7879 BROWN MS DESTINATION T7664			Act. BW	96 73							
LCS Z 61542264			Adj. WW	105 501							
G A R GAME ON LCS 915 HXC 541R			<b>EPD Top% Data</b>								
LCC CHEYENNE B221L PIE MR. CHEYENNE 431 PIE MS E 2103			MARB	0.57 20							
GIEFER LAVENDAR Y0131452834			YG	0.17 87							
LONK JR H853			CW	20 60							
GIEFER MAGPIE			REA	-0.13 90							
PSR LUCY 0165			FAT	0.03 64							
MPPA: 100 Dam Age: 5/30/11											
<b>EPD</b>	HB	GM	CED	BW	WW	YW	MILK	ME	HPG	CEM	STAY
<b>Top%</b>	192	48	15	-2.6	52	82	21	-2	10	10	18
	20	70	18	25	73	73	69	35	65	2	27

## 3 GIEFER PARAMOUNT F527

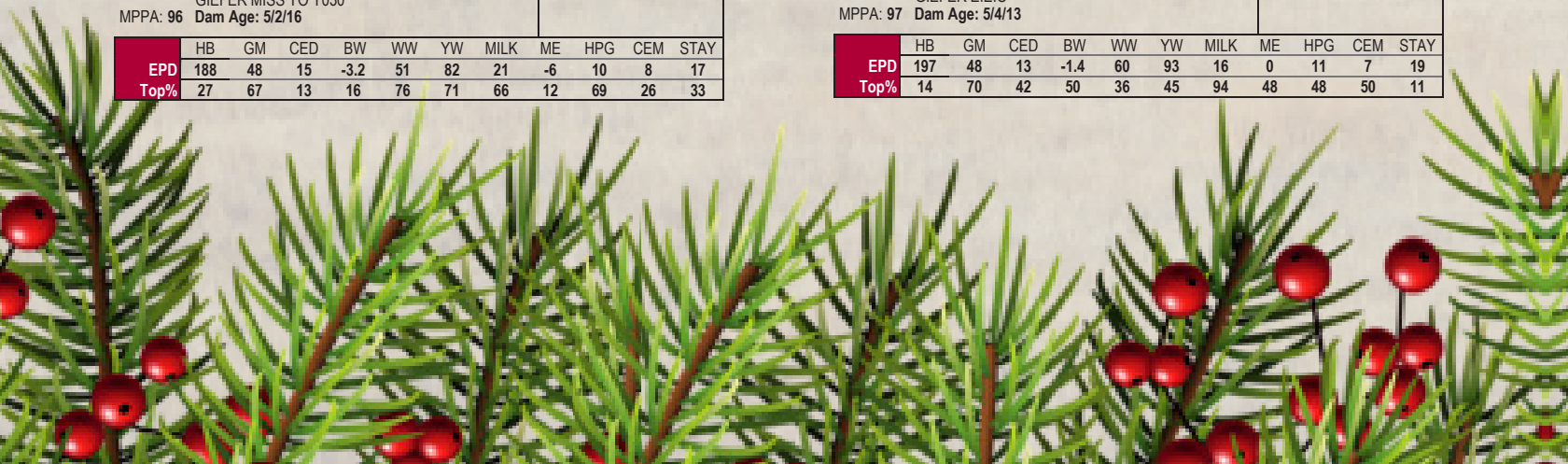
<b>BULL</b> GIEFF527	5/4/18	A100% AR 4075246	<b>Ratio Data</b>								
BECKTON NEBULA P P707 BROWN PARAMOUNT X7879 BROWN MS DESTINATION T7664			Act. BW	108 82							
LCS Z 61542264			Adj. WW	93 443							
G A R GAME ON LCS 915 HXC 541R			<b>EPD Top% Data</b>								
LONK DISCOVERY K122 GIEFER RED REVOLUTION 529 DMW BUCKEYE MARILYN L23			MARB	0.45 44							
GIEFER RUBY SLIPPER Z0271551879			YG	0.19 93							
PIE MR. CHEYENNE 431			CW	21 55							
GIEFER BUCKEYE T043			REA	-0.23 98							
GIEFER MISS PRISSY P025			FAT	0.03 47							
MPPA: 107 Dam Age: 4/25/12											
<b>EPD</b>	HB	GM	CED	BW	WW	YW	MILK	ME	HPG	CEM	STAY
<b>Top%</b>	159	47	11	-0.4	53	86	18	7	9	6	16
	76	78	71	72	67	62	85	97	89	78	49

## 4 GIEFER PARAMOUNT F528

<b>BULL</b> GIEFF528	5/15/18	A100% AR 4075248	<b>Ratio Data</b>								
BECKTON NEBULA P P707 BROWN PARAMOUNT X7879 BROWN MS DESTINATION T7664			Act. BW	96 66							
LCS Z 61542264			Adj. WW	94 449							
G A R GAME ON LCS 915 HXC 541R			<b>EPD Top% Data</b>								
BECKTON JULIAN Z382 J7 BECKTON JULIAN B139 J8 BECKTON CHRISTY Z083 J			MARB	0.52 29							
GIEFER COTTONWOOD D0283580561			YG	0.19 94							
MUSHRUSH IMPRESSION X381			CW	17 71							
GIEFER MISS YO A020			REA	-0.17 94							
GIEFER MISS YO Y030			FAT	0.04 84							
MPPA: 96 Dam Age: 5/2/16											
<b>EPD</b>	HB	GM	CED	BW	WW	YW	MILK	ME	HPG	CEM	STAY
<b>Top%</b>	188	48	15	-3.2	51	82	21	-6	10	8	17
	27	67	13	16	76	71	66	12	69	26	33

## 5 GIEFER PARAMOUNT F540

<b>BULL</b> GIEFF540	4/24/18	A100% AR 4075266	<b>Ratio Data</b>								
BECKTON NEBULA P P707 BROWN PARAMOUNT X7879 BROWN MS DESTINATION T7664			Act. BW	103 77							
LCS Z 61542264			Adj. WW	109 520							
G A R GAME ON LCS 915 HXC 541R			<b>EPD Top% Data</b>								
BUF CRK MEDALLION N328 BUF CRK MEDALLION S347 BUF CRK REDPRIDE 6089			MARB	0.5 33							
GIEFER MISS YO A0401646688			YG	0.2 95							
LONK DISCOVERY K122			CW	25 37							
GIEFER MISS YO U058			REA	-0.14 92							
GIEFER EIEIO			FAT	0.04 72							
MPPA: 97 Dam Age: 5/4/13											
<b>EPD</b>	HB	GM	CED	BW	WW	YW	MILK	ME	HPG	CEM	STAY
<b>Top%</b>	197	48	13	-1.4	60	93	16	0	11	7	19
	14	70	42	50	36	45	94	48	48	50	11



# PROGENY OF LCS Z 6...



6		GIEFER PARAMOUNT F545		A100% AR		Ratio		Data			
BULL	4/25/18			4075276							
GIEFF545	BECKTON NEBULA P P707						Act. BW	99	75		
	BROWN PARAMOUNT X7879						Adj. WW	102	487		
	BROWN MS DESTINATION T7664										
LCS Z 61542264	G A R GAME ON										
LCS 915	HXC 541R										
	BECKTON NEBULA PJ S543										
	BECKTON NEBULA W616 J4										
	BECKTON BARMAID P864 JC										
GIEFER SHAWNEE Y0451452856	PIE MR. CHEYENNE 431										
	GIEFER SHAWNEE U060										
	GIEFER MISS PRISSY P017										
MPPA: 99	Dam Age: 4/21/11										
EPD	HB	GM	CED	BW	WW	YW	MILK	ME	HPG	CEM	STAY
Top%	176	48	14	-2.3	55	90	21	7	10	7	17
	48	66	31	31	58	53	67	97	65	57	37

7		GIEFER PARAMOUNT F575		A100% AR		Ratio		Data			
BULL	5/6/18			4075316							
GIEFF575	BECKTON NEBULA P P707						Act. BW	76	58		
	BROWN PARAMOUNT X7879						Adj. WW	85	405		
	BROWN MS DESTINATION T7664										
LCS Z 61542264	G A R GAME ON										
LCS 915	HXC 541R										
	BECKTON NEBULA M045										
	BUF CRK ORION W011										
	BUF CRK AMY T116										
GIEFER MEADOWLARK Z0751551890	BUF CRK MEDALLION S347										
	GIEFER MISS BLISS X102										
	GIEFER MISS BLISS U059										
MPPA: 101	Dam Age: 5/3/12										
EPD	HB	GM	CED	BW	WW	YW	MILK	ME	HPG	CEM	STAY
Top%	200	46	18	-5.4	44	70	22	-5	11	10	19
	12	91	3	2	93	90	53	17	58	5	16

8		GIEFER PARAMOUNT F583		A100% AR		Ratio		Data			
BULL	4/25/18			4075322							
GIEFF583	BECKTON NEBULA P P707						Act. BW	111	80		
	BROWN PARAMOUNT X7879						Adj. WW	106	504		
	BROWN MS DESTINATION T7664										
LCS Z 61542264	G A R GAME ON										
LCS 915	HXC 541R										
	ANDRAS IN FOCUS B152										
	ANDRAS IN FOCUS 1158										
	ANDRAS PINETA B112										
GIEFER COTTONWOOD C0833505679	BUF CRK MEDALLION S347										
	GIEFER MISS YO A040										
	GIEFER MISS YO U058										
MPPA: 101	Dam Age: 6/1/15										
EPD	HB	GM	CED	BW	WW	YW	MILK	ME	HPG	CEM	STAY
Top%	188	48	12	-0.7	56	88	20	1	12	7	18
	26	61	50	66	56	57	77	58	28	60	22

9		GIEFER PARAMOUNT F586		A100% AR		Ratio		Data			
BULL	4/30/18			4075326							
GIEFF586	BECKTON NEBULA P P707						Act. BW	108	78		
	BROWN PARAMOUNT X7879						Adj. WW	105	498		
	BROWN MS DESTINATION T7664										
LCS Z 61542264	G A R GAME ON										
LCS 915	HXC 541R										
	ANDRAS IN FOCUS B152										
	ANDRAS IN FOCUS 1158										
	ANDRAS PINETA B112										
GIEFER RUBY SLIPPER C0863505687	GIEFER RED REVOLUTION 529										
	GIEFER BUCKEYE Y053										
	GIEFER BUCKEYE U063										
MPPA: 96	Dam Age: 5/13/15										
EPD	HB	GM	CED	BW	WW	YW	MILK	ME	HPG	CEM	STAY
Top%	172	49	13	-1.2	57	90	19	5	11	7	16
	55	52	42	55	52	50	81	92	49	48	52



# PROGENY OF LCS Z 6...

## 10 GIEFER PARAMOUNT F598

<b>BULL</b> GIEFF598	4/30/18	<b>A100% AR</b> 4075330										
BECKTON NEBULA P P707 BROWN PARAMOUNT X7879 BROWN MS DESTINATION T7664 <b>LCS Z 61542264</b> G A R GAME ON LCS 915 HXC 541R  BUF CRK MEDALLION N328 BUF CRK MEDALLION S347 BUF CRK REDPRIDE 6089 <b>GIEFER BUCKEYE X0981401336</b> PIE MR. CHEYENNE 431 GIEFER BUCKEYE T043 GIEFER MISS PRISSY P025 MPPA: 100 <b>Dam Age: 4/24/10</b>			<b>Ratio</b>		<b>Data</b>							
			Act. BW	92	70							
			Adj. WW	83	393							
			<b>EPD</b>		<b>Top%</b>	<b>Data</b>						
			MARB	0.53	27							
			YG	0.21	96							
			CW	17	71							
			REA	-0.23	98							
			FAT	0.04	79							
<b>EPD</b>	HB	GM	CED	BW	WW	YW	MILK	ME	HPG	CEM	STAY	
<b>Top%</b>	196	47	14	-2.8	47	76	20	2	12	8	19	
	16	80	26	22	88	83	70	71	28	26	13	

## 11 GIEFER JULIAN F519

<b>BULL</b> GIEFF519	5/3/18	<b>A100% AR</b> 4075230										
BECKTON JULIAN X721 E6 BECKTON JULIAN Z382 J7 BECKTON LARKABA X064 J <b>BECKTON JULIAN B139 J81705695</b> BECKTON JULIAN X721 E6 BECKTON CHRISTY Z083 J BECKTON CHRISTY X648 D  BECKTON NEBULA M045 BUF CRK ORION W011 BUF CRK AMY T116 <b>GIEFER CHEYENNE A0191646680</b> PIE MR. CHEYENNE 431 GIEFER BELGA Y022 GIEFER BELGA T033 MPPA: 103 <b>Dam Age: 4/20/13</b>			<b>Ratio</b>		<b>Data</b>							
			Act. BW	96	73							
			Adj. WW	111	530							
			<b>EPD</b>		<b>Top%</b>	<b>Data</b>						
			MARB	0.4	57							
			YG	0.17	85							
			CW	7	94							
			REA	-0.1	86							
			FAT	0.05	97							
<b>EPD</b>	HB	GM	CED	BW	WW	YW	MILK	ME	HPG	CEM	STAY	
<b>Top%</b>	210	48	18	-5.2	49	79	23	-6	13	10	19	
	5	72	2	2	81	77	46	12	27	5	15	

# PROGENY OF BECKTON JULIAN B139 J8...

## 12 GIEFER JULIAN F541

<b>BULL</b> GIEFF541	4/28/18	<b>A100% AR</b> 4075268										
BECKTON JULIAN X721 E6 BECKTON JULIAN Z382 J7 BECKTON LARKABA X064 J <b>BECKTON JULIAN B139 J81705695</b> BECKTON JULIAN X721 E6 BECKTON CHRISTY Z083 J BECKTON CHRISTY X648 D  BECKTON NEBULA PJ S543 BECKTON NEBULA W616 J4 BECKTON BARMAID P864 JC <b>GIEFER REDBUD Z0411551869</b> PIE MR. CHEYENNE 431 GIEFER LOUP U068 GIEFER RAVISHING RED 048 MPPA: 97 <b>Dam Age: 5/21/12</b>			<b>Ratio</b>		<b>Data</b>							
			Act. BW	88	67							
			Adj. WW	97	461							
			<b>EPD</b>		<b>Top%</b>	<b>Data</b>						
			MARB	0.44	47							
			YG	0.18	90							
			CW	11	90							
			REA	-0.14	92							
			FAT	0.05	95							
<b>EPD</b>	HB	GM	CED	BW	WW	YW	MILK	ME	HPG	CEM	STAY	
<b>Top%</b>	218	47	18	-5.4	47	74	21	-3	12	9	20	
	3	79	2	2	87	86	59	26	31	11	5	

## 13 GIEFER JULIAN F543

<b>BULL</b> GIEFF543	5/1/18	<b>A100% AR</b> 4075272										
BECKTON JULIAN X721 E6 BECKTON JULIAN Z382 J7 BECKTON LARKABA X064 J <b>BECKTON JULIAN B139 J81705695</b> BECKTON JULIAN X721 E6 BECKTON CHRISTY Z083 J BECKTON CHRISTY X648 D  ANDRAS IN FOCUS B152 ANDRAS IN FOCUS 1158 ANDRAS PINETA B112 <b>GIEFER SHAWNEE C0433505672</b> BUF CRK MEDALLION S347 GIEFER SHAWNEE Y012 GIEFER MISS PRISSY P017 MPPA: 102 <b>Dam Age: 4/24/15</b>			<b>Ratio</b>		<b>Data</b>							
			Act. BW	87	62							
			Adj. WW	105	498							
			<b>EPD</b>		<b>Top%</b>	<b>Data</b>						
			MARB	0.49	35							
			YG	0.17	85							
			CW	15	78							
			REA	-0.04	74							
			FAT	0.05	95							
<b>EPD</b>	HB	GM	CED	BW	WW	YW	MILK	ME	HPG	CEM	STAY	
<b>Top%</b>	216	48	18	-4.7	51	80	22	-2	15	10	19	
	3	63	2	4	75	75	49	32	7	7	12	

## 14 GIEFER JULIAN F549

<b>BULL</b> GIEFF549	5/6/18	<b>A100% AR</b> 4075280										
BECKTON JULIAN X721 E6 BECKTON JULIAN Z382 J7 BECKTON LARKABA X064 J <b>BECKTON JULIAN B139 J81705695</b> BECKTON JULIAN X721 E6 BECKTON CHRISTY Z083 J BECKTON CHRISTY X648 D  BROWN PARAMOUNT X7879 LCS Z 6 LCS 915 <b>GIEFER COTTONWOOD C0493505708</b> BUF CRK MEDALLION S347 GIEFER MISS YO X016 GIEFER MISS YO T011 MPPA: 96 <b>Dam Age: 5/9/15</b>			<b>Ratio</b>		<b>Data</b>							
			Act. BW	115	83							
			Adj. WW	98	464							
			<b>EPD</b>		<b>Top%</b>	<b>Data</b>						
			MARB	0.49	35							
			YG	0.19	93							
			CW	14	83							
			REA	-0.13	90							
			FAT	0.05	95							
<b>EPD</b>	HB	GM	CED	BW	WW	YW	MILK	ME	HPG	CEM	STAY	
<b>Top%</b>	211	49	14	-1.8	53	85	20	-9	14	8	19	
	4	50	31	40	67	64	75	4	15	34	9	







# PROGENY OF GIEFER OCTANT B515...



# PROGENY OF BECKTON NEW ERA D206 ...

## 20 GIEFER NEW ERA F501

BULL 4/22/18 A100% AR  
GIEFF501 4075202

BECKTON NEW ERA Y194  
BECKTON NEW ERA B265 J2  
BECKTON MINERVA W901 J  
BECKTON NEW ERA D206 E33551017  
BECKTON EMPEROR Z750 N3  
BECKTON MINOLA B063 E  
BECKTON MINOLA Z752 N

ANDRAS IN FOCUS B152  
ANDRAS IN FOCUS 1158  
ANDRAS PINETA B112  
GIEFER SHAWNEE C0013505727  
BUF CRK MEDALLION S347  
GIEFER SHAWNEE Z002  
GIEFER MISS PRISSY P007  
MPPA: 108 Dam Age: 4/22/15

	Ratio	Data
Act. BW	116	84
Adj. WW	115	547
	EPD	Top% Data
MARB	0.46	42
YG	0.15	80
CW	23	48
REA	-0.02	71
FAT	0.04	72

	HB	GM	CED	BW	WW	YW	MILK	ME	HPG	CEM	STAY
EPD	197	49	15	-1.7	60	94	20	1	13	7	18
Top%	14	45	13	44	37	42	73	61	22	55	24

## 21 GIEFER NEW ERA F509

BULL 5/1/18 A100% AR  
GIEFF509 4075214

BECKTON NEW ERA Y194  
BECKTON NEW ERA B265 J2  
BECKTON MINERVA W901 J  
BECKTON NEW ERA D206 E33551017  
BECKTON EMPEROR Z750 N3  
BECKTON MINOLA B063 E  
BECKTON MINOLA Z752 N

BUF CRK MEDALLION N328  
BUF CRK MEDALLION S347  
BUF CRK REDPRIDE 6089  
GIEFER MISS YO Y0091452820  
LONK DISCOVERY K122  
GIEFER RAVISHING RED 003  
GIEFER EIEIO  
MPPA: 108 Dam Age: 5/17/11

	Ratio	Data
Act. BW	105	80
Adj. WW	114	543
	EPD	Top% Data
MARB	0.36	69
YG	0.16	81
CW	24	44
REA	-0.07	81
FAT	0.03	56

	HB	GM	CED	BW	WW	YW	MILK	ME	HPG	CEM	STAY
EPD	209	48	15	-2	61	94	20	-1	13	7	19
Top%	5	62	13	37	34	41	77	40	17	57	9

## 22 GIEFER NEW ERA F529

BULL 4/25/18 A100% AR  
GIEFF529 4075250

BECKTON NEW ERA Y194  
BECKTON NEW ERA B265 J2  
BECKTON MINERVA W901 J  
BECKTON NEW ERA D206 E33551017  
BECKTON EMPEROR Z750 N3  
BECKTON MINOLA B063 E  
BECKTON MINOLA Z752 N

BUF CRK MEDALLION N328  
BUF CRK MEDALLION S347  
BUF CRK REDPRIDE 6089  
GIEFER MISS YO Z0291551880  
LONK DISCOVERY K122  
GIEFER MISS YO U058  
GIEFER EIEIO  
MPPA: 105 Dam Age: 4/23/12

	Ratio	Data
Act. BW	94	71
Adj. WW	116	551
	EPD	Top% Data
MARB	0.36	69
YG	0.16	81
CW	24	44
REA	-0.07	81
FAT	0.03	56

	HB	GM	CED	BW	WW	YW	MILK	ME	HPG	CEM	STAY
EPD	214	47	18	-4	58	90	20	-1	12	8	20
Top%	4	75	2	8	46	52	75	38	32	20	7



# PROGENY OF BECKTON NEW ERA D206 ...

## 23 GIEFER NEW ERA F536

BULL 5/10/18 A100% AR  
GIEFF536 4075260

BECKTON NEW ERA Y194  
BECKTON NEW ERA B265 J2  
BECKTON MINERVA W901 J

BECKTON NEW ERA D206 E33551017  
BECKTON EMPEROR Z750 N3  
BECKTON MINOLA B063 E  
BECKTON MINOLA Z752 N

BUF CRK MEDALLION N328  
BUF CRK MEDALLION S347  
BUF CRK REDPRIDE 6089

GIEFER SMOKY HILL Y0361452827  
LONK DISCOVERY K122  
GIEFER SMOKY HILL S049  
NPS 255

MPPA: 101 Dam Age: 4/30/11

Ratio		Data	
Act. BW	105	80	
Adj. WW	114	544	
EPD		Top% Data	
MARB	0.32	79	
YG	0.14	71	
CW	23	47	
REA	-0.08	84	
FAT	0.02	33	

	HB	GM	CED	BW	WW	YW	MILK	ME	HPG	CEM	STAY
EPD	208	48	17	-2.7	61	96	16	-6	12	8	19
Top%	6	58	6	24	30	34	95	13	36	24	15

## 24 GIEFER NEW ERA F548

BULL 4/18/18 A100% AR  
GIEFF548 4075278

BECKTON NEW ERA Y194  
BECKTON NEW ERA B265 J2  
BECKTON MINERVA W901 J

BECKTON NEW ERA D206 E33551017  
BECKTON EMPEROR Z750 N3  
BECKTON MINOLA B063 E  
BECKTON MINOLA Z752 N

BROWN PARAMOUNT X7879  
LCS Z 6  
LCS 915

GIEFER SUNFLOWER C0483505734  
BUF CRK MEDALLION S347  
GIEFER SUNFLOWER Y015  
GIEFER HOBOS GIRL S024

MPPA: 106 Dam Age: 5/2/15

Ratio		Data	
Act. BW	92	66	
Adj. WW	98	465	
EPD		Top% Data	
MARB	0.44	47	
YG	0.18	91	
CW	21	57	
REA	-0.16	93	
FAT	0.03	64	

	HB	GM	CED	BW	WW	YW	MILK	ME	HPG	CEM	STAY
EPD	197	47	18	-4.6	51	81	19	-1	12	8	18
Top%	14	78	3	4	77	74	79	41	39	32	22

## 25 GIEFER NEW ERA F565

BULL 5/8/18 A100% AR  
GIEFF565 4075302

BECKTON NEW ERA Y194  
BECKTON NEW ERA B265 J2  
BECKTON MINERVA W901 J

BECKTON NEW ERA D206 E33551017  
BECKTON EMPEROR Z750 N3  
BECKTON MINOLA B063 E  
BECKTON MINOLA Z752 N

BECKTON NEBULA M045  
BUF CRK ORION W011  
BUF CRK AMY T116

GIEFER COTTONWOOD D0653580497  
PIE MR. CHEYENNE 431  
GIEFER MISS YO Y071  
GIEFER MISS YO W083

MPPA: 97 Dam Age: 5/20/16

Ratio		Data	
Act. BW	80	54	
Adj. WW	99	471	
EPD		Top% Data	
MARB	0.37	66	
YG	0.16	83	
CW	12	88	
REA	-0.16	93	
FAT	0.04	81	

	HB	GM	CED	BW	WW	YW	MILK	ME	HPG	CEM	STAY
EPD	196	47	20	-6.5	44	73	22	-7	11	10	17
Top%	15	86	1	1	92	87	49	9	56	2	37

## 26 GIEFER NEW ERA F599

BULL 4/27/18 A100% AR  
GIEFF599 4075332

BECKTON NEW ERA Y194  
BECKTON NEW ERA B265 J2  
BECKTON MINERVA W901 J

BECKTON NEW ERA D206 E33551017  
BECKTON EMPEROR Z750 N3  
BECKTON MINOLA B063 E  
BECKTON MINOLA Z752 N

BECKTON NEBULA M045  
BUF CRK ORION W011  
BUF CRK AMY T116

GIEFER SHAWNEE C0993505738  
BUF CRK MEDALLION S347  
GIEFER SHAWNEE W072  
GIEFER SHAWNEE T015

MPPA: 103 Dam Age: 4/19/15

Ratio		Data	
Act. BW	104	75	
Adj. WW	105	500	
EPD		Top% Data	
MARB	0.37	66	
YG	0.16	81	
CW	14	82	
REA	-0.11	88	
FAT	0.04	81	

	HB	GM	CED	BW	WW	YW	MILK	ME	HPG	CEM	STAY
EPD	215	48	18	-3.8	53	87	20	-7	12	9	19
Top%	3	60	3	9	69	61	70	8	28	11	11

# PROGENY OF 5L INDEPENDENCE 560...

## 27 GIEFER INDEPENDENCE F522

BULL 4/22/18 A100% AR  
GIEFF522 4075236

BUF CRK LANCER R017  
BUF CRK THE RIGHT KIND U199  
BUF CRK SHOSHONE R353

5L INDEPENDENCE 560-298Y1450309  
TC STOCKMAN 365  
5L BLACK ADINA 525-560  
5L ADINA 293-525

BECKTON NEBULA M045  
BUF CRK ORION W011  
BUF CRK AMY T116

GIEFER AD ASTRA D0223580501  
BECKTON NEBULA W616 J4  
GIEFER LASS Z010  
GIEFER LASS U029

MPPA: 103 Dam Age: 5/6/16

Ratio		Data	
Act. BW	86	58	
Adj. WW	108	516	
EPD		Top% Data	
MARB	0.5	33	
YG	0.11	51	
CW	15	77	
REA	-0.11	88	
FAT	0.02	25	

	HB	GM	CED	BW	WW	YW	MILK	ME	HPG	CEM	STAY
EPD	186	49	18	-5.5	57	92	21	-5	14	8	15
Top%	29	49	2	1	51	47	69	16	15	27	63



Lot 27

# OUR WEANLING HEIFERS...

Our weanling heifers have been dewormed and vaccinated for clostridial diseases (such as tetanus and blackleg), viral diseases (BVD, IBR, BRSV, PI3), vibrio, leptospirosis, and pinkeye, and have received an official calfhooood vaccination (brucellosis).

**BECAUSE OF THE MANY ENVIRONMENTAL AND OPERATIONAL FACTORS WHICH BEAR ON HEIFER PREGNANCY – AND WHICH ARE BEYOND OUR CONTROL – THESE HEIFERS SELL AS IS, WHERE IS, WITH NO BREEDING GUARANTEE.**



## PROGENY OF LCS Z 6...

**28 GIEFER SHAWNEE G021**

COW 4/24/19 A100% AR  
GIEFG021 4158304

BECKTON NEBULA P P707  
BROWN PARAMOUNT X7879  
BROWN MS DESTINATION T7664

LCS Z 61542264

G A R GAME ON  
LCS 915  
HXC 541R

BUF CRK MEDALLION N328  
BUF CRK MEDALLION S347  
BUF CRK REDPRIDE 6089

GIEFER SHAWNEE Z0021551877  
LONK DISCOVERY K122  
GIEFER MISS PRISSY P007  
LONK SHAWNEE J962

MPPA: 107 Dam Age: 4/21/12

		Ratio		Data	
Act. BW	95	61			
Adj. WW	115	435			
		EPD		Top% Data	
MARB	0.51	31			
YG	0.2	95			
CW	19	63			
REA	-0.22	97			
FAT	0.03	68			

EPD	HB	GM	CED	BW	WW	YW	MILK	ME	HPG	CEM	STAY
177	47	12	-1	57	87	14	0	10	6	17	
Top%	46	77	54	58	50	60	97	46	63	64	31

**29 GIEFER COTTONWOOD G093**

COW 4/29/19 A100% AR  
GIEFG093 4158216

BECKTON NEBULA P P707  
BROWN PARAMOUNT X7879  
BROWN MS DESTINATION T7664

LCS Z 61542264

G A R GAME ON  
LCS 915  
HXC 541R

BUF CRK MEDALLION N328  
BUF CRK MEDALLION S347  
BUF CRK REDPRIDE 6089

GIEFER MISS YO Y0341452845  
LONK DISCOVERY K122  
GIEFER MISS YO T044  
LONK MISS YO H812

MPPA: 103 Dam Age: 4/29/11

		Ratio		Data	
Act. BW	130	84			
Adj. WW	122	463			
		EPD		Top% Data	
MARB	0.46	42			
YG	0.19	92			
CW	22	49			
REA	-0.19	96			
FAT	0.03	48			

EPD	HB	GM	CED	BW	WW	YW	MILK	ME	HPG	CEM	STAY
182	47	12	-1.4	56	87	14	-6	12	6	17	
Top%	36	77	50	52	57	59	97	13	41	64	29

**30 GIEFER LAVENDAR G103**

COW 5/7/19 A100% AR  
GIEFG103 4158322

BECKTON NEBULA P P707  
BROWN PARAMOUNT X7879  
BROWN MS DESTINATION T7664

LCS Z 61542264

G A R GAME ON  
LCS 915  
HXC 541R

BECKTON NEBULA M045  
BUF CRK ORION W011  
BUF CRK AMY T116

GIEFER AD ASTRA C0423505714  
BECKTON NEBULA W616 J4  
GIEFER LASS Z010  
GIEFER LASS U029

MPPA: 99 Dam Age: 4/27/15

		Ratio		Data	
Act. BW	123	77			
Adj. WW	102	388			
		EPD		Top% Data	
MARB	0.47	40			
YG	0.21	96			
CW	16	76			
REA	-0.23	98			
FAT	0.04	82			

EPD	HB	GM	CED	BW	WW	YW	MILK	ME	HPG	CEM	STAY
182	47	15	-3.6	52	83	17	-4	10	7	17	
Top%	36	81	13	11	72	70	92	21	67	38	36

**31 GIEFER SHAWNEE G119**

COW 6/16/19 A100% AR  
GIEFG119 4158312

BECKTON NEBULA P P707  
BROWN PARAMOUNT X7879  
BROWN MS DESTINATION T7664

LCS Z 61542264

G A R GAME ON  
LCS 915  
HXC 541R

BECKTON NEBULA PJ S543  
BECKTON NEBULA W616 J4  
BECKTON BARMAID P864 JC

GIEFER SHAWNEE Y0451452856  
PIE MR. CHEYENNE 431  
GIEFER SHAWNEE U060  
GIEFER MISS PRISSY P017

MPPA: 99 Dam Age: 4/21/11

		Ratio		Data	
Act. BW	105	68			
Adj. WW	59	212			
		EPD		Top% Data	
MARB	0.56	23			
YG	0.22	97			
CW	26	36			
REA	-0.15	93			
FAT	0.04	80			

EPD	HB	GM	CED	BW	WW	YW	MILK	ME	HPG	CEM	STAY
171	48	13	-1.9	58	92	17	6	11	6	16	
Top%	57	61	38	39	47	45	91	97	60	63	47

# PROGENY OF LCS Z 6...



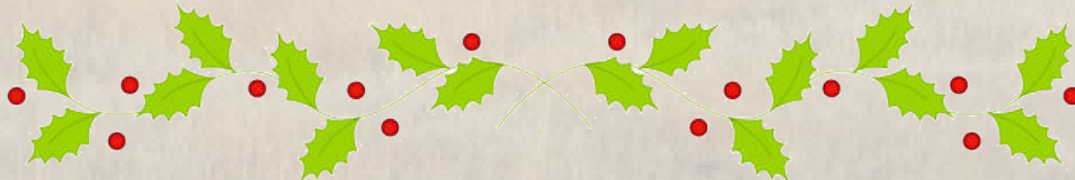
<b>32</b>	<b>GIEFER SHAWNEE G121</b>																																	
COW GIEFG121	5/8/19 A100% AR 4158262																																	
BECKTON NEBULA P P707 BROWN PARAMOUNT X7879 BROWN MS DESTINATION T7664																																		
LCS Z 61542264																																		
G A R GAME ON LCS 915 HXC 541R																																		
BECKTON JULIAN Z382 J7 BECKTON JULIAN B139 J8 BECKTON CHRISTY Z083 J																																		
<b>GIEFER SHAWNEE E0463826199</b> BUF CRK MEDALLION S347 GIEFER SHAWNEE Y012 GIEFER MISS PRISSY P017																																		
MPPA: 98 Dam Age: 5/25/17																																		
	<table border="1"> <thead> <tr> <th>Ratio</th> <th>Data</th> </tr> </thead> <tbody> <tr> <td>Act. BW</td> <td>96 54</td> </tr> <tr> <td>Adj. WW</td> <td>94 358</td> </tr> </tbody> </table>	Ratio	Data	Act. BW	96 54	Adj. WW	94 358																											
Ratio	Data																																	
Act. BW	96 54																																	
Adj. WW	94 358																																	
	<table border="1"> <thead> <tr> <th>EPD</th> <th>Top%</th> <th>Data</th> </tr> </thead> <tbody> <tr> <td>MARB</td> <td>0.53</td> <td>27</td> </tr> <tr> <td>YG</td> <td>0.21</td> <td>97</td> </tr> <tr> <td>CW</td> <td>19</td> <td>64</td> </tr> <tr> <td>REA</td> <td>-0.19</td> <td>95</td> </tr> <tr> <td>FAT</td> <td>0.04</td> <td>88</td> </tr> </tbody> </table>	EPD	Top%	Data	MARB	0.53	27	YG	0.21	97	CW	19	64	REA	-0.19	95	FAT	0.04	88															
EPD	Top%	Data																																
MARB	0.53	27																																
YG	0.21	97																																
CW	19	64																																
REA	-0.19	95																																
FAT	0.04	88																																
	<table border="1"> <thead> <tr> <th>HB</th> <th>GM</th> <th>CED</th> <th>BW</th> <th>WW</th> <th>YW</th> <th>MILK</th> <th>ME</th> <th>HPG</th> <th>CEM</th> <th>STAY</th> </tr> </thead> <tbody> <tr> <td>EPD</td> <td>185</td> <td>48</td> <td>14</td> <td>-2.2</td> <td>55</td> <td>87</td> <td>16</td> <td>-2</td> <td>11</td> <td>7 17</td> </tr> <tr> <td>Top%</td> <td>30</td> <td>69</td> <td>30</td> <td>34</td> <td>58</td> <td>59</td> <td>94</td> <td>36</td> <td>46</td> <td>37 31</td> </tr> </tbody> </table>	HB	GM	CED	BW	WW	YW	MILK	ME	HPG	CEM	STAY	EPD	185	48	14	-2.2	55	87	16	-2	11	7 17	Top%	30	69	30	34	58	59	94	36	46	37 31
HB	GM	CED	BW	WW	YW	MILK	ME	HPG	CEM	STAY																								
EPD	185	48	14	-2.2	55	87	16	-2	11	7 17																								
Top%	30	69	30	34	58	59	94	36	46	37 31																								

<b>33</b>	<b>GIEFER AS ASTRA G149</b>																																	
COW GIEFG149	4/28/19 A100% AR 4158302																																	
BECKTON NEBULA P P707 BROWN PARAMOUNT X7879 BROWN MS DESTINATION T7664																																		
LCS Z 61542264																																		
G A R GAME ON LCS 915 HXC 541R																																		
BECKTON NEBULA M045 BUF CRK ORION W011 BUF CRK AMY T116																																		
<b>GIEFER REDBUD Z0731551902</b> PIE MR. CHEYENNE 431 GIEFER LOUP X100 GIEFER RAVISHING RED 048																																		
MPPA: 102 Dam Age: 5/12/12																																		
	<table border="1"> <thead> <tr> <th>Ratio</th> <th>Data</th> </tr> </thead> <tbody> <tr> <td>Act. BW</td> <td>104 67</td> </tr> <tr> <td>Adj. WW</td> <td>119 526</td> </tr> </tbody> </table>	Ratio	Data	Act. BW	104 67	Adj. WW	119 526																											
Ratio	Data																																	
Act. BW	104 67																																	
Adj. WW	119 526																																	
	<table border="1"> <thead> <tr> <th>EPD</th> <th>Top%</th> <th>Data</th> </tr> </thead> <tbody> <tr> <td>MARB</td> <td>0.52</td> <td>29</td> </tr> <tr> <td>YG</td> <td>0.21</td> <td>96</td> </tr> <tr> <td>CW</td> <td>17</td> <td>70</td> </tr> <tr> <td>REA</td> <td>-0.18</td> <td>95</td> </tr> <tr> <td>FAT</td> <td>0.04</td> <td>89</td> </tr> </tbody> </table>	EPD	Top%	Data	MARB	0.52	29	YG	0.21	96	CW	17	70	REA	-0.18	95	FAT	0.04	89															
EPD	Top%	Data																																
MARB	0.52	29																																
YG	0.21	96																																
CW	17	70																																
REA	-0.18	95																																
FAT	0.04	89																																
	<table border="1"> <thead> <tr> <th>HB</th> <th>GM</th> <th>CED</th> <th>BW</th> <th>WW</th> <th>YW</th> <th>MILK</th> <th>ME</th> <th>HPG</th> <th>CEM</th> <th>STAY</th> </tr> </thead> <tbody> <tr> <td>EPD</td> <td>191</td> <td>48</td> <td>14</td> <td>-2.4</td> <td>56</td> <td>90</td> <td>16</td> <td>-3</td> <td>10</td> <td>8 18</td> </tr> <tr> <td>Top%</td> <td>21</td> <td>58</td> <td>22</td> <td>29</td> <td>54</td> <td>51</td> <td>93</td> <td>29</td> <td>69</td> <td>18 27</td> </tr> </tbody> </table>	HB	GM	CED	BW	WW	YW	MILK	ME	HPG	CEM	STAY	EPD	191	48	14	-2.4	56	90	16	-3	10	8 18	Top%	21	58	22	29	54	51	93	29	69	18 27
HB	GM	CED	BW	WW	YW	MILK	ME	HPG	CEM	STAY																								
EPD	191	48	14	-2.4	56	90	16	-3	10	8 18																								
Top%	21	58	22	29	54	51	93	29	69	18 27																								

<b>34</b>	<b>GIEFER RUBY SLIPPER G154</b>																																	
COW GIEFG154	6/14/19 A100% AR 4158268																																	
BECKTON NEBULA P P707 BROWN PARAMOUNT X7879 BROWN MS DESTINATION T7664																																		
LCS Z 61542264																																		
G A R GAME ON LCS 915 HXC 541R																																		
BECKTON JULIAN Z382 J7 BECKTON JULIAN B139 J8 BECKTON CHRISTY Z083 J																																		
<b>GIEFER RUBY SLIPPER E0903826217</b> BUF CRK ORION W011 GIEFER RUBY SLIPPER Z024 GIEFER BUCKEYE X041																																		
MPPA: 88 Dam Age: 5/3/17																																		
	<table border="1"> <thead> <tr> <th>Ratio</th> <th>Data</th> </tr> </thead> <tbody> <tr> <td>Act. BW</td> <td>112 65</td> </tr> <tr> <td>Adj. WW</td> <td>70 267</td> </tr> </tbody> </table>	Ratio	Data	Act. BW	112 65	Adj. WW	70 267																											
Ratio	Data																																	
Act. BW	112 65																																	
Adj. WW	70 267																																	
	<table border="1"> <thead> <tr> <th>EPD</th> <th>Top%</th> <th>Data</th> </tr> </thead> <tbody> <tr> <td>MARB</td> <td>0.52</td> <td>29</td> </tr> <tr> <td>YG</td> <td>0.21</td> <td>96</td> </tr> <tr> <td>CW</td> <td>16</td> <td>76</td> </tr> <tr> <td>REA</td> <td>-0.17</td> <td>95</td> </tr> <tr> <td>FAT</td> <td>0.05</td> <td>94</td> </tr> </tbody> </table>	EPD	Top%	Data	MARB	0.52	29	YG	0.21	96	CW	16	76	REA	-0.17	95	FAT	0.05	94															
EPD	Top%	Data																																
MARB	0.52	29																																
YG	0.21	96																																
CW	16	76																																
REA	-0.17	95																																
FAT	0.05	94																																
	<table border="1"> <thead> <tr> <th>HB</th> <th>GM</th> <th>CED</th> <th>BW</th> <th>WW</th> <th>YW</th> <th>MILK</th> <th>ME</th> <th>HPG</th> <th>CEM</th> <th>STAY</th> </tr> </thead> <tbody> <tr> <td>EPD</td> <td>188</td> <td>48</td> <td>15</td> <td>-3</td> <td>54</td> <td>85</td> <td>17</td> <td>-5</td> <td>11</td> <td>8 17</td> </tr> <tr> <td>Top%</td> <td>26</td> <td>63</td> <td>17</td> <td>19</td> <td>66</td> <td>65</td> <td>90</td> <td>18</td> <td>55</td> <td>18 37</td> </tr> </tbody> </table>	HB	GM	CED	BW	WW	YW	MILK	ME	HPG	CEM	STAY	EPD	188	48	15	-3	54	85	17	-5	11	8 17	Top%	26	63	17	19	66	65	90	18	55	18 37
HB	GM	CED	BW	WW	YW	MILK	ME	HPG	CEM	STAY																								
EPD	188	48	15	-3	54	85	17	-5	11	8 17																								
Top%	26	63	17	19	66	65	90	18	55	18 37																								

<b>35</b>	<b>GIEFER SHAWNEE G155</b>																																	
COW GIEFG155	6/15/19 A100% AR 4158270																																	
BECKTON NEBULA P P707 BROWN PARAMOUNT X7879 BROWN MS DESTINATION T7664																																		
LCS Z 61542264																																		
G A R GAME ON LCS 915 HXC 541R																																		
BECKTON JULIAN Z382 J7 BECKTON JULIAN B139 J8 BECKTON CHRISTY Z083 J																																		
<b>GIEFER SHAWNEE E0913826225</b> BECKTON NEBULA W616 J4 GIEFER SHAWNEE Z031 GIEFER SHAWNEE U060																																		
MPPA: 97 Dam Age: 4/27/17																																		
	<table border="1"> <thead> <tr> <th>Ratio</th> <th>Data</th> </tr> </thead> <tbody> <tr> <td>Act. BW</td> <td>105 61</td> </tr> <tr> <td>Adj. WW</td> <td>93 353</td> </tr> </tbody> </table>	Ratio	Data	Act. BW	105 61	Adj. WW	93 353																											
Ratio	Data																																	
Act. BW	105 61																																	
Adj. WW	93 353																																	
	<table border="1"> <thead> <tr> <th>EPD</th> <th>Top%</th> <th>Data</th> </tr> </thead> <tbody> <tr> <td>MARB</td> <td>0.55</td> <td>23</td> </tr> <tr> <td>YG</td> <td>0.22</td> <td>97</td> </tr> <tr> <td>CW</td> <td>19</td> <td>64</td> </tr> <tr> <td>REA</td> <td>-0.18</td> <td>95</td> </tr> <tr> <td>FAT</td> <td>0.05</td> <td>91</td> </tr> </tbody> </table>	EPD	Top%	Data	MARB	0.55	23	YG	0.22	97	CW	19	64	REA	-0.18	95	FAT	0.05	91															
EPD	Top%	Data																																
MARB	0.55	23																																
YG	0.22	97																																
CW	19	64																																
REA	-0.18	95																																
FAT	0.05	91																																
	<table border="1"> <thead> <tr> <th>HB</th> <th>GM</th> <th>CED</th> <th>BW</th> <th>WW</th> <th>YW</th> <th>MILK</th> <th>ME</th> <th>HPG</th> <th>CEM</th> <th>STAY</th> </tr> </thead> <tbody> <tr> <td>EPD</td> <td>183</td> <td>48</td> <td>15</td> <td>-2.8</td> <td>54</td> <td>86</td> <td>17</td> <td>-2</td> <td>11</td> <td>8 17</td> </tr> <tr> <td>Top%</td> <td>34</td> <td>65</td> <td>21</td> <td>23</td> <td>63</td> <td>63</td> <td>90</td> <td>36</td> <td>60</td> <td>34 37</td> </tr> </tbody> </table>	HB	GM	CED	BW	WW	YW	MILK	ME	HPG	CEM	STAY	EPD	183	48	15	-2.8	54	86	17	-2	11	8 17	Top%	34	65	21	23	63	63	90	36	60	34 37
HB	GM	CED	BW	WW	YW	MILK	ME	HPG	CEM	STAY																								
EPD	183	48	15	-2.8	54	86	17	-2	11	8 17																								
Top%	34	65	21	23	63	63	90	36	60	34 37																								

<b>36</b>	<b>GIEFER GUNSMOKE G156</b>																																	
COW GIEFG156	4/24/19 A100% AR 4158318																																	
BECKTON NEBULA P P707 BROWN PARAMOUNT X7879 BROWN MS DESTINATION T7664																																		
LCS Z 61542264																																		
G A R GAME ON LCS 915 HXC 541R																																		
BECKTON NEBULA M045 BUF CRK ORION W011 BUF CRK AMY T116																																		
<b>GIEFER GUNSMOKE B0921713824</b> PIE MR. CHEYENNE 431 GIEFER GUNSMOKE X107 GIEFER GUNSMOKE U067																																		
MPPA: 101 Dam Age: 5/25/14																																		
	<table border="1"> <thead> <tr> <th>Ratio</th> <th>Data</th> </tr> </thead> <tbody> <tr> <td>Act. BW</td> <td>118 75</td> </tr> <tr> <td>Adj. WW</td> <td>118 522</td> </tr> </tbody> </table>	Ratio	Data	Act. BW	118 75	Adj. WW	118 522																											
Ratio	Data																																	
Act. BW	118 75																																	
Adj. WW	118 522																																	
	<table border="1"> <thead> <tr> <th>EPD</th> <th>Top%</th> <th>Data</th> </tr> </thead> <tbody> <tr> <td>MARB</td> <td>0.51</td> <td>30</td> </tr> <tr> <td>YG</td> <td>0.2</td> <td>95</td> </tr> <tr> <td>CW</td> <td>17</td> <td>71</td> </tr> <tr> <td>REA</td> <td>-0.19</td> <td>95</td> </tr> <tr> <td>FAT</td> <td>0.04</td> <td>87</td> </tr> </tbody> </table>	EPD	Top%	Data	MARB	0.51	30	YG	0.2	95	CW	17	71	REA	-0.19	95	FAT	0.04	87															
EPD	Top%	Data																																
MARB	0.51	30																																
YG	0.2	95																																
CW	17	71																																
REA	-0.19	95																																
FAT	0.04	87																																
	<table border="1"> <thead> <tr> <th>HB</th> <th>GM</th> <th>CED</th> <th>BW</th> <th>WW</th> <th>YW</th> <th>MILK</th> <th>ME</th> <th>HPG</th> <th>CEM</th> <th>STAY</th> </tr> </thead> <tbody> <tr> <td>EPD</td> <td>182</td> <td>49</td> <td>13</td> <td>-1.4</td> <td>58</td> <td>93</td> <td>14</td> <td>-1</td> <td>11</td> <td>7 17</td> </tr> <tr> <td>Top%</td> <td>37</td> <td>50</td> <td>43</td> <td>50</td> <td>44</td> <td>43</td> <td>97</td> <td>39</td> <td>51</td> <td>44 40</td> </tr> </tbody> </table>	HB	GM	CED	BW	WW	YW	MILK	ME	HPG	CEM	STAY	EPD	182	49	13	-1.4	58	93	14	-1	11	7 17	Top%	37	50	43	50	44	43	97	39	51	44 40
HB	GM	CED	BW	WW	YW	MILK	ME	HPG	CEM	STAY																								
EPD	182	49	13	-1.4	58	93	14	-1	11	7 17																								
Top%	37	50	43	50	44	43	97	39	51	44 40																								



# PROGENY OF BECKTON JULIAN B139 J8...

## 37 GIEFER SHAWNEE G013

COW	5/6/19	A100% AR	<b>Ratio</b>		<b>Data</b>	
GIEFG013		4158350	Act. BW	107	67	
	BECKTON JULIAN X721 E6		Adj. WW	116	438	
	BECKTON JULIAN Z382 J7		<b>EPD Top% Data</b>			
	BECKTON LARKABA X064 J		MARB	0.47	39	
BECKTON JULIAN B139 J81705695			YG	0.17	86	
	BECKTON JULIAN X721 E6		CW	12	86	
	BECKTON CHRISTY Z083 J		REA	-0.06	80	
	BECKTON CHRISTY X648 D		FAT	0.05	95	
	ANDRAS IN FOCUS B152					
	ANDRAS IN FOCUS 1158					
	ANDRAS PINETA B112					
GIEFER SHAWNEE C0013505727						
	BUF CRK MEDALLION S347					
	GIEFER SHAWNEE Z002					
	GIEFER MISS PRISSY P007					
MPPA: 108	Dam Age: 4/22/15					

	HB	GM	CED	BW	WW	YW	MILK	ME	HPG	CEM	STAY
EPD	217	48	16	-3.4	50	78	22	-2	13	8	20
Top%	3	65	8	13	78	79	53	32	18	21	5

## 38 GIEFER CHEYENNE G047

COW	4/29/19	A100% AR	<b>Ratio</b>		<b>Data</b>	
GIEFG047		4158186	Act. BW	107	65	
	BECKTON JULIAN X721 E6		Adj. WW	106	468	
	BECKTON JULIAN Z382 J7		<b>EPD Top% Data</b>			
	BECKTON LARKABA X064 J		MARB	0.49	36	
BECKTON JULIAN B139 J81705695			YG	0.17	86	
	BECKTON JULIAN X721 E6		CW	10	91	
	BECKTON CHRISTY Z083 J		REA	-0.06	80	
	BECKTON CHRISTY X648 D		FAT	0.06	98	
	ANDRAS IN FOCUS B152					
	ANDRAS IN FOCUS 1158					
	ANDRAS PINETA B112					
GIEFER CHEYENNE D0263580547						
	BUF CRK ORION W011					
	GIEFER CHEYENNE A019					
	GIEFER BELGA Y022					
MPPA: 103	Dam Age: 4/26/16					

	HB	GM	CED	BW	WW	YW	MILK	ME	HPG	CEM	STAY
EPD	218	48	18	-4.8	46	74	23	-4	14	9	20
Top%	3	65	3	3	88	85	41	20	16	9	8

## 39 GIEFER RUBY SLIPPER G066

COW	5/3/19	A100% AR	<b>Ratio</b>		<b>Data</b>	
GIEFG066		4158320	Act. BW	124	80	
	BECKTON JULIAN X721 E6		Adj. WW	113	405	
	BECKTON JULIAN Z382 J7		<b>EPD Top% Data</b>			
	BECKTON LARKABA X064 J		MARB	0.32	78	
BECKTON JULIAN B139 J81705695			YG	0.16	81	
	BECKTON JULIAN X721 E6		CW	13	83	
	BECKTON CHRISTY Z083 J		REA	-0.14	91	
	BECKTON CHRISTY X648 D		FAT	0.04	78	
	LONK DISCOVERY K122					
	GIEFER RED REVOLUTION 529					
	DMW BUCKEYE MARILYN L23					
GIEFER RUBY SLIPPER Z0271551879						
	PIE MR. CHEYENNE 431					
	GIEFER BUCKEYE T043					
	GIEFER MISS PRISSY P025					
MPPA: 107	Dam Age: 4/25/12					

	HB	GM	CED	BW	WW	YW	MILK	ME	HPG	CEM	STAY
EPD	194	47	15	-3.1	49	78	19	1	10	7	19
Top%	17	85	18	17	82	79	81	58	68	39	12

## 40 GIEFER COTTONWOOD G084

COW	5/8/19	A100% AR	<b>Ratio</b>		<b>Data</b>	
GIEFG084		4158344	Act. BW	116	73	
	BECKTON JULIAN X721 E6		Adj. WW	80	354	
	BECKTON JULIAN Z382 J7		<b>EPD Top% Data</b>			
	BECKTON LARKABA X064 J		MARB	0.46	41	
BECKTON JULIAN B139 J81705695			YG	0.2	94	
	BECKTON JULIAN X721 E6		CW	12	86	
	BECKTON CHRISTY Z083 J		REA	-0.13	90	
	BECKTON CHRISTY X648 D		FAT	0.06	97	
	BROWN PARAMOUNT X7879					
	LCS Z6					
	LCS 915					
GIEFER COTTONWOOD C0323505721						
	BUF CRK ORION W011					
	GIEFER MISS YO Z006					
	GIEFER MISS YO X016					
MPPA: 96	Dam Age: 4/25/15					

	HB	GM	CED	BW	WW	YW	MILK	ME	HPG	CEM	STAY
EPD	225	48	17	-4.7	50	81	20	-8	13	9	21
Top%	1	69	4	4	78	74	70	5	27	7	4

## 41 GIEFER SMOKY HILL G095

COW	5/25/19	A100% AR	<b>Ratio</b>		<b>Data</b>	
GIEFG095		4158310	Act. BW	115	74	
	BECKTON JULIAN X721 E6		Adj. WW	97	430	
	BECKTON JULIAN Z382 J7		<b>EPD Top% Data</b>			
	BECKTON LARKABA X064 J		MARB	0.33	76	
BECKTON JULIAN B139 J81705695			YG	0.15	79	
	BECKTON JULIAN X721 E6		CW	12	88	
	BECKTON CHRISTY Z083 J		REA	-0.14	91	
	BECKTON CHRISTY X648 D		FAT	0.04	79	
	BUF CRK MEDALLION N328					
	BUF CRK MEDALLION S347					
	BUF CRK REDPRIDE 6089					
GIEFER SMOKY HILL Y0361452827						
	LONK DISCOVERY K122					
	GIEFER SMOKY HILL S049					
	NPS 255					
MPPA: 101	Dam Age: 4/30/11					

	HB	GM	CED	BW	WW	YW	MILK	ME	HPG	CEM	STAY
EPD	225	47	16	-3.8	51	80	17	-9	12	9	21
Top%	1	77	7	9	76	76	89	3	30	10	3

## 42 GIEFER SHAWNEE G109

COW	4/26/19	A100% AR	<b>Ratio</b>		<b>Data</b>	
GIEFG109		4158204	Act. BW	107	67	
	BECKTON JULIAN X721 E6		Adj. WW	101	446	
	BECKTON JULIAN Z382 J7		<b>EPD Top% Data</b>			
	BECKTON LARKABA X064 J		MARB	0.48	37	
BECKTON JULIAN B139 J81705695			YG	0.17	86	
	BECKTON JULIAN X721 E6		CW	14	80	
	BECKTON CHRISTY Z083 J		REA	-0.05	76	
	BECKTON CHRISTY X648 D		FAT	0.05	95	
	ANDRAS IN FOCUS B152					
	ANDRAS IN FOCUS 1158					
	ANDRAS PINETA B112					
GIEFER SHAWNEE C0433505672						
	BUF CRK MEDALLION S347					
	GIEFER SHAWNEE Y012					
	GIEFER MISS PRISSY P017					
MPPA: 102	Dam Age: 4/24/15					

	HB	GM	CED	BW	WW	YW	MILK	ME	HPG	CEM	STAY
EPD	221	48	17	-4	51	79	21	-2	14	9	20
Top%	2	65	5	8	77	77	60	31	9	14	5



# PROGENY OF BECKTON JULIAN B139 J8...

## 43 GIEFER COTTONWOOD G128

<b>COW</b>	4/27/19	<b>A100% AR</b>	
<b>GIEFG128</b>		4158316	
BECKTON JULIAN X721 E6 BECKTON JULIAN Z382 J7 BECKTON LARKABA X064 J <b>BECKTON JULIAN B139 J81705695</b> BECKTON JULIAN X721 E6 BECKTON CHRISTY Z083 J BECKTON CHRISTY X648 D  ANDRAS IN FOCUS B152 ANDRAS IN FOCUS 1158 ANDRAS PINETA B112 <b>GIEFER COTTONWOOD C0503505713</b> BECKTON NEBULA W616 J4 GIEFER MISS YO Z017 GIEFER MISS YO S038 MPPA: 90 <b>Dam Age:</b> 4/29/15			
		<b>Ratio</b>	<b>Data</b>
Act. BW	104	65	
Adj. WW	87	312	
		<b>EPD</b>	<b>Top% Data</b>
MARB	0.47	39	
YG	0.18	89	
CW	14	83	
REA	-0.08	84	
FAT	0.05	96	

<b>EPD</b>	HB	GM	CED	BW	WW	YW	MILK	ME	HPG	CEM	STAY
<b>Top%</b>	211	48	16	-3	51	79	18	1	13	8	20
	5	65	10	18	77	77	88	59	25	36	6

## 44 GIEFER RUBY SLIPPER G129

<b>COW</b>	5/10/19	<b>A100% AR</b>	
<b>GIEFG129</b>		4158234	
BECKTON JULIAN X721 E6 BECKTON JULIAN Z382 J7 BECKTON LARKABA X064 J <b>BECKTON JULIAN B139 J81705695</b> BECKTON JULIAN X721 E6 BECKTON CHRISTY Z083 J BECKTON CHRISTY X648 D  LONK DISCOVERY K122 GIEFER RED REVOLUTION 529 DMW BUCKEYE MARILYN L23 <b>GIEFER BUCKEYE Y0531452855</b> PIE MR. CHEYENNE 431 GIEFER BUCKEYE U063 GIEFER MISS PRISSEY P025 MPPA: 102 <b>Dam Age:</b> 4/27/11			
		<b>Ratio</b>	<b>Data</b>
Act. BW	124	80	
Adj. WW	110	552	
		<b>EPD</b>	<b>Top% Data</b>
MARB	0.39	59	
YG	0.18	89	
CW	14	82	
REA	-0.13	90	
FAT	0.05	91	

<b>EPD</b>	HB	GM	CED	BW	WW	YW	MILK	ME	HPG	CEM	STAY
<b>Top%</b>	190	47	16	-4.1	47	77	21	3	10	8	18
	24	82	8	7	87	82	67	74	70	21	22

## 45 GIEFER COTTONWOOD G148

<b>COW</b>	5/11/19	<b>A100% AR</b>	
<b>GIEFG148</b>		4158354	
BECKTON JULIAN X721 E6 BECKTON JULIAN Z382 J7 BECKTON LARKABA X064 J <b>BECKTON JULIAN B139 J81705695</b> BECKTON JULIAN X721 E6 BECKTON CHRISTY Z083 J BECKTON CHRISTY X648 D  BECKTON NEBULA M045 BUF CRK ORION W011 BUF CRK AMY T116 <b>GIEFER COTTONWOOD D0653580497</b> PIE MR. CHEYENNE 431 GIEFER MISS YO Y071 GIEFER MISS YO W083 MPPA: 97 <b>Dam Age:</b> 5/20/16			
		<b>Ratio</b>	<b>Data</b>
Act. BW	91	55	
Adj. WW	90	397	
		<b>EPD</b>	<b>Top% Data</b>
MARB	0.38	62	
YG	0.17	88	
CW	4	97	
REA	-0.17	94	
FAT	0.06	97	

<b>EPD</b>	HB	GM	CED	BW	WW	YW	MILK	ME	HPG	CEM	STAY
<b>Top%</b>	214	47	19	-5.8	42	69	22	-10	11	10	19
	4	85	1	1	95	91	47	2	48	3	10

## 46 GIEFER SHAWNEE G158

<b>COW</b>	5/8/19	<b>A100% AR</b>	
<b>GIEFG158</b>		4158348	
BECKTON JULIAN X721 E6 BECKTON JULIAN Z382 J7 BECKTON LARKABA X064 J <b>BECKTON JULIAN B139 J81705695</b> BECKTON JULIAN X721 E6 BECKTON CHRISTY Z083 J BECKTON CHRISTY X648 D  BECKTON NEBULA M045 BUF CRK ORION W011 BUF CRK AMY T116 <b>GIEFER SHAWNEE C0993505738</b> BUF CRK MEDALLION S347 GIEFER SHAWNEE W072 GIEFER SHAWNEE T015 MPPA: 103 <b>Dam Age:</b> 4/19/15			
		<b>Ratio</b>	<b>Data</b>
Act. BW	119	76	
Adj. WW	108	479	
		<b>EPD</b>	<b>Top% Data</b>
MARB	0.38	62	
YG	0.17	86	
CW	5	96	
REA	-0.12	90	
FAT	0.06	98	

<b>EPD</b>	HB	GM	CED	BW	WW	YW	MILK	ME	HPG	CEM	STAY
<b>Top%</b>	235	48	18	-4.8	47	76	21	-11	13	10	21
	1	71	3	3	87	82	60	2	22	4	2

## 47 GIEFER COTTONWOOD G163

<b>COW</b>	5/6/19	<b>A100% AR</b>	
<b>GIEFG163</b>		4158284	
BECKTON JULIAN X721 E6 BECKTON JULIAN Z382 J7 BECKTON LARKABA X064 J <b>BECKTON JULIAN B139 J81705695</b> BECKTON JULIAN X721 E6 BECKTON CHRISTY Z083 J BECKTON CHRISTY X648 D  BECKTON NEBULA M045 BUF CRK ORION W011 BUF CRK AMY T116 <b>GIEFER COTTONWOOD E1153826263</b> LCS Z 6 GIEFER COTTONWOOD C058 GIEFER MISS YO A020 MPPA: 94 <b>Dam Age:</b> 4/17/17			
		<b>Ratio</b>	<b>Data</b>
Act. BW	84	47	
Adj. WW	86	326	
		<b>EPD</b>	<b>Top% Data</b>
MARB	0.4	56	
YG	0.18	89	
CW	6	96	
REA	-0.14	92	
FAT	0.06	97	

<b>EPD</b>	HB	GM	CED	BW	WW	YW	MILK	ME	HPG	CEM	STAY
<b>Top%</b>	220	47	18	-5.4	46	75	21	-11	11	9	20
	2	75	2	1	88	84	66	2	51	8	5

## 48 GIEFER COTTONWOOD G165

<b>COW</b>	5/10/19	<b>A100% AR</b>	
<b>GIEFG165</b>		4158298	
BECKTON JULIAN X721 E6 BECKTON JULIAN Z382 J7 BECKTON LARKABA X064 J <b>BECKTON JULIAN B139 J81705695</b> BECKTON JULIAN X721 E6 BECKTON CHRISTY Z083 J BECKTON CHRISTY X648 D  BROWN PARAMOUNT X7879 LCS Z 6 LCS 915 <b>GIEFER COTTONWOOD E1183826317</b> BUF CRK MEDALLION S347 GIEFER MISS YO X016 GIEFER MISS YO T011 MPPA: 100 <b>Dam Age:</b> 4/30/17			
		<b>Ratio</b>	<b>Data</b>
Act. BW	85	48	
Adj. WW	99	439	
		<b>EPD</b>	<b>Top% Data</b>
MARB	0.48	37	
YG	0.19	93	
CW	13	85	
REA	-0.14	92	
FAT	0.05	95	

<b>EPD</b>	HB	GM	CED	BW	WW	YW	MILK	ME	HPG	CEM	STAY
<b>Top%</b>	220	48	16	-3.8	48	77	20	-8	13	9	20
	2	69	10	9	84	81	72	5	26	13	4



# PROGENY OF GIEFER OCTANT B515...

49 GIEFER SHAWNEE G132		A100% AR		Ratio		Data										
COW	5/6/19	4158190		Act. BW	102	62										
GIEFG132				Adj. WW	106	381										
BECKTON NEBULA M045 BUF CRK ORION W011 BUF CRK AMY T116 GIEFER OCTANT B5151713792 BUF CRK MEDALLION S347 GIEFER SUNFLOWER Y015 GIEFER HOBOS GIRL S024  ANDRAS IN FOCUS B152 ANDRAS IN FOCUS 1158 ANDRAS PINETA B112 GIEFER SHAWNEE D0593580489 BECKTON NEBULA W616 J4 GIEFER SHAWNEE Y045 GIEFER SHAWNEE U060 MPPA: 99 Dam Age: 5/2/16																
				EPD		Top%										
EPD	206	47	18	-5.3	47	75	19	2	13	8	19					
Top%	7	82	2	2	87	84	78	69	25	25	11					

50 GIEFER GUNSMOKE G151		A100% AR		Ratio		Data										
COW	4/23/19	4158358		Act. BW	84	49										
GIEFG151				Adj. WW	90	451										
BECKTON NEBULA M045 BUF CRK ORION W011 BUF CRK AMY T116 GIEFER OCTANT B5151713792 BUF CRK MEDALLION S347 GIEFER SUNFLOWER Y015 GIEFER HOBOS GIRL S024  BECKTON JULIAN Z382 J7 BECKTON JULIAN B139 J8 BECKTON CHRISTY Z083 J GIEFER GUNSMOKE D0823580485 BUF CRK MEDALLION S347 GIEFER GUNSMOKE Y054 GIEFER GUNSMOKE U067 MPPA: 96 Dam Age: 7/29/16																
				EPD		Top%										
EPD	210	46	17	-5.2	46	72	17	-9	12	8	20					
Top%	5	90	4	2	89	88	90	3	35	32	7					

51 GIEFER COTTONWOOD G152		A100% AR		Ratio		Data										
COW	5/10/19	4158266		Act. BW	74	41										
GIEFG152				Adj. WW	92	460										
BECKTON NEBULA M045 BUF CRK ORION W011 BUF CRK AMY T116 GIEFER OCTANT B5151713792 BUF CRK MEDALLION S347 GIEFER SUNFLOWER Y015 GIEFER HOBOS GIRL S024  BROWN PARAMOUNT X7879 LCS Z 6 LCS 915 GIEFER COTTONWOOD E0853826211 MUSHRUSH IMPRESSION X381 GIEFER MISS YO A020 GIEFER MISS YO Y030 MPPA: 97 Dam Age: 4/21/17																
				EPD		Top%										
EPD	198	46	18	-5.3	49	79	18	-6	10	8	19					
Top%	13	89	3	2	81	78	88	12	72	26	14					

52 GIEFER SMOKY HILL G157		A100% AR		Ratio		Data										
COW	5/1/19	4158272		Act. BW	67	36										
GIEFG157				Adj. WW	86	327										
BECKTON NEBULA M045 BUF CRK ORION W011 BUF CRK AMY T116 GIEFER OCTANT B5151713792 BUF CRK MEDALLION S347 GIEFER SUNFLOWER Y015 GIEFER HOBOS GIRL S024  BECKTON JULIAN Z382 J7 BECKTON JULIAN B139 J8 BECKTON CHRISTY Z083 J GIEFER SMOKY HILL C0973826233 BUF CRK MEDALLION S347 GIEFER SMOKY HILL Y036 GIEFER SMOKY HILL S049 MPPA: 94 Dam Age: 5/10/17																
				EPD		Top%										
EPD	218	46	18	-5.2	47	74	17	-7	11	9	20					
Top%	3	90	2	2	88	85	89	7	44	14	4					

53 GIEFER RUBY SLIPPER G164		A100% AR		Ratio		Data										
COW	5/13/19	4158288		Act. BW	73	40										
GIEFG164				Adj. WW	100	377										
BECKTON NEBULA M045 BUF CRK ORION W011 BUF CRK AMY T116 GIEFER OCTANT B5151713792 BUF CRK MEDALLION S347 GIEFER SUNFLOWER Y015 GIEFER HOBOS GIRL S024  BECKTON JULIAN Z382 J7 BECKTON JULIAN B139 J8 BECKTON CHRISTY Z083 J GIEFER RUBY SLIPPER E1173826269 BUF CRK ORION W011 GIEFER RUBY SLIPPER Z063 GIEFER BUCKEYE X098 MPPA: 100 Dam Age: 5/16/17																
				EPD		Top%										
EPD	220	47	19	-5.8	45	72	19	-5	12	9	21					
Top%	2	88	1	1	91	88	82	15	41	11	4					

54 GIEFER COTTONWOOD G080		A100% AR		Ratio		Data										
COW	5/25/19	4158194		Act. BW	84	50										
GIEFG080				Adj. WW	93	467										
BECKTON NEBULA M045 BUF CRK ORION W011 BUF CRK AMY T116 GIEFER OCTANT B5151713792 BUF CRK MEDALLION S347 GIEFER SUNFLOWER Y015 GIEFER HOBOS GIRL S024  BECKTON JULIAN Z382 J7 BECKTON JULIAN B139 J8 BECKTON CHRISTY Z083 J GIEFER COTTONWOOD D0283580561 MUSHRUSH IMPRESSION X381 GIEFER MISS YO A020 GIEFER MISS YO Y030 MPPA: 96 Dam Age: 5/2/16																
				EPD		Top%										
EPD	212	47	19	-6	45	73	19	-9	11	9	20					
Top%	4	88	1	1	91	87	82	3	56	16	8					





# PROGENY OF BECKTON NEW ERA D206 ...

## 55 GIEFER SUNFLOWER G124

COW 5/4/19		A100% AR 4158346		<b>Ratio Data</b>							
GIEFG124				Act. BW	112 70						
BECKTON NEW ERA Y194				Adj. WW	122 463						
BECKTON NEW ERA B265 J2				<b>EPD Top% Data</b>							
BECKTON MINERVA W901 J				MARB	0.44 46						
<b>BECKTON NEW ERA D206 E33551017</b>				YG	0.18 90						
BECKTON EMPEROR Z750 N3				CW	21 57						
BECKTON MINOLA B063 E				REA	-0.17 94						
BECKTON MINOLA Z752 N				FAT	0.03 60						
BROWN PARAMOUNT X7879											
LCS Z6											
LCS 915											
<b>GIEFER SUNFLOWER C0483505734</b>											
BUF CRK MEDALLION S347											
GIEFER SUNFLOWER Y015											
GIEFER HOBO'S GIRL S024											
MPPA: 106 Dam Age: 5/2/15											
<b>EPD</b>	HB	GM	CED	BW	WW	YW	MILK	ME	HPG	CEM	STAY
	193	48	17	-3.9	55	88	15	-1	12	7	17
<b>Top%</b>	19	64	4	9	59	58	95	39	35	39	33

## 56 GIEFER SUNFLOWER G143

COW 5/2/19		A100% AR 4158264		<b>Ratio Data</b>							
GIEFG143				Act. BW	79 44						
BECKTON NEW ERA Y194				Adj. WW	80 355						
BECKTON NEW ERA B265 J2				<b>EPD Top% Data</b>							
BECKTON MINERVA W901 J				MARB	0.44 46						
<b>BECKTON NEW ERA D206 E33551017</b>				YG	0.18 90						
BECKTON EMPEROR Z750 N3				CW	21 57						
BECKTON MINOLA B063 E				REA	-0.16 94						
BECKTON MINOLA Z752 N				FAT	0.03 61						
BROWN PARAMOUNT X7879											
LCS Z6											
LCS 915											
<b>GIEFER SUNFLOWER E0623826205</b>											
BUF CRK MEDALLION S347											
GIEFER SUNFLOWER Y015											
GIEFER HOBO'S GIRL S024											
MPPA: 92 Dam Age: 4/29/17											
<b>EPD</b>	HB	GM	CED	BW	WW	YW	MILK	ME	HPG	CEM	STAY
	190	48	16	-3.3	56	89	15	-3	11	7	17
<b>Top%</b>	24	60	7	15	55	55	95	28	45	49	36

## 57 GIEFER SMOKY HILL G150

COW 5/8/19		A100% AR 4158214		<b>Ratio Data</b>							
GIEFG150				Act. BW	107 69						
BECKTON NEW ERA Y194				Adj. WW	108 408						
BECKTON NEW ERA B265 J2				<b>EPD Top% Data</b>							
BECKTON MINERVA W901 J				MARB	0.34 76						
<b>BECKTON NEW ERA D206 E33551017</b>				YG	0.15 80						
BECKTON EMPEROR Z750 N3				CW	10 91						
BECKTON MINOLA B063 E				REA	-0.2 96						
BECKTON MINOLA Z752 N				FAT	0.03 67						
BECKTON NEBULA M045											
BUF CRK ORION W011											
BUF CRK AMY T116											
<b>GIEFER SMOKEY HILL B0771713774</b>											
LONK DISCOVERY K122											
GIEFER SMOKY HILL S049											
NPS 255											
MPPA: 99 Dam Age: 4/29/14											
<b>EPD</b>	HB	GM	CED	BW	WW	YW	MILK	ME	HPG	CEM	STAY
	184	48	18	-3.6	53	85	14	0	10	8	16
<b>Top%</b>	32	61	3	11	68	64	97	48	73	32	48

## 58 GIEFER REDBUD G159

COW 4/29/19		A100% AR 4158334		<b>Ratio Data</b>							
GIEFG159				Act. BW	110 71						
BECKTON NEW ERA Y194				Adj. WW	112 402						
BECKTON NEW ERA B265 J2				<b>EPD Top% Data</b>							
BECKTON MINERVA W901 J				MARB	0.43 51						
<b>BECKTON NEW ERA D206 E33551017</b>				YG	0.15 79						
BECKTON EMPEROR Z750 N3				CW	16 75						
BECKTON MINOLA B063 E				REA	-0.14 92						
BECKTON MINOLA Z752 N				FAT	0.03 59						
LCC CHEYENNE B221L											
PIE MR. CHEYENNE 431											
PIE MS E 2103											
<b>GIEFER LOUP X1001401338</b>											
LONK DISCOVERY K122											
GIEFER RAVISHING RED 048											
PSR LOUP 0263											
MPPA: 107 Dam Age: 5/2/10											
<b>EPD</b>	HB	GM	CED	BW	WW	YW	MILK	ME	HPG	CEM	STAY
	191	49	15	-1.7	56	90	17	1	12	8	17
<b>Top%</b>	21	49	16	45	56	53	90	64	41	28	32

# PROGENY OF BUFFALO CREEK ORION W011...

## 59 GIEFER AD ASTRA G096

COW 4/10/19		A100% AR 4158260		<b>Ratio Data</b>							
GIEFG096				Act. BW	88 49						
BECKTON NEPTUNE R2 K065				Adj. WW	85 307						
BECKTON NEBULA M045				<b>EPD Top% Data</b>							
BECKTON BELGA K285 JL				MARB	0.38 64						
<b>BUF CRK ORION W0111329474</b>				YG	0.18 91						
BUF CRK ROMEO L081				CW	8 94						
BUF CRK AMY T116				REA	-0.22 98						
BUF CRK AMY 5912				FAT	0.05 91						
BROWN PARAMOUNT X7879											
LCS Z6											
LCS 915											
<b>GIEFER AD ASTRA E0373826197</b>											
BECKTON NEBULA W616 J4											
GIEFER LASS Z010											
GIEFER LASS U029											
MPPA: 94 Dam Age: 5/24/17											
<b>EPD</b>	HB	GM	CED	BW	WW	YW	MILK	ME	HPG	CEM	STAY
	197	47	16	-3.9	49	80	19	-5	9	7	19
<b>Top%</b>	15	83	10	9	81	75	79	18	81	37	13

## 60 GIEFER REDBUD G153

COW 4/11/19		A100% AR 4158362		<b>Ratio Data</b>							
GIEFG153				Act. BW	109 65						
BECKTON NEPTUNE R2 K065				Adj. WW	115 575						
BECKTON NEBULA M045				<b>EPD Top% Data</b>							
BECKTON BELGA K285 JL				MARB	0.36 69						
<b>BUF CRK ORION W0111329474</b>				YG	0.17 89						
BUF CRK ROMEO L081				CW	3 98						
BUF CRK AMY T116				REA	-0.16 93						
BUF CRK AMY 5912				FAT	0.06 98						
BECKTON JULIAN Z382 J7											
BECKTON JULIAN B139 J8											
BECKTON CHRISTY Z083 J											
<b>GIEFER REDBUD D0893580545</b>											
BECKTON NEBULA W616 J4											
GIEFER RED BUD A062											
GIEFER LOUP X100											
MPPA: 106 Dam Age: 7/27/16											
<b>EPD</b>	HB	GM	CED	BW	WW	YW	MILK	ME	HPG	CEM	STAY
	219	47	19	-5.9	48	78	21	-6	11	10	20
<b>Top%</b>	2	75	1	1	85	80	68	11	51	4	7





## OUR HERD SIRES...

<b>C</b>		<b>PIEPER MR. CHEYENNE 431</b>										
BULL		2/3/04		A100% AR		Ratio		Data				
PIE431				998688		Act. BW	92	70				
BUF CRK CHF 824-1658						Adj. WW	103	699				
BFCK CHEROKEE CNYN 4912						Adj. YW	109	1413				
MRM 1431 8611 9109						ADG	115	4.46				
LCC CHEYENNE B221L786422						SC						
LMAN ROBIN HOOD 1174B						Frame		6.5				
HXC 701G						<b>EPD Top% Data</b>						
HXC 555E						MARB	0.66	4.36				
RED RYL ELWAY 58D						YG	-0.09					
RED COLE MISTER E 9J						CW	24					
COLE FIRST LADY 9E						REA	0.27	17.62				
PIE MS E 2103861191						FAT	-0.02	0.36				
MABES SINAMAN												
PIE FAYETTE SINA 8015												
PIE FAYETTE DUCHY 418												
<b>EPD Top%</b>		HB	GM	CED	BW	WW	YW	MILK	ME	HPG	CEM	STAY
		133	54	4	-2.6	54	97	24	11	10	6	11

<b>D</b>		<b>BUF CRK MEDALLION S347</b>										
BULL		5/27/06		A100% AR		Ratio		Data				
BUFS347				1119485		Act. BW	91	78				
BFCK CHEROKEE CNYN 4912						Adj. WW	109	550				
BUF CRK GOLD MEDAL L091						Adj. YW	114	1006				
BUF CRK EILEEN 5521						ADG	119	2.85				
BUF CRK MEDALLION N328922352						SC		36				
BUF CRK BARNEY 3474						Frame		3.9				
BUF CRK BELGA 6114						<b>EPD Top% Data</b>						
BUF CRK BELGA 1040						MARB	0.2	2.89				
RCN DYNAMO 732						YG	0.13					
BUF CRK DYNAMICS 3820						CW	13					
BUF CRK PRIMROSE 3150						REA	0.02	14.06				
BUF CRK REDPRIDE 6089728692						FAT	0.05	0.32				
BUF CRK CNTRCHIEF 4358												
BUF CRK REDPRIDE 5102												
MRM 3573 9328 9504												
<b>EPD Top%</b>		HB	GM	CED	BW	WW	YW	MILK	ME	HPG	CEM	STAY
		144	46	13	-4.9	59	85	12	-8	18	3	12

<b>E</b>		<b>GIEFER RED REVOLUTION 529</b>										
BULL		5/2/05		A100% AR		Ratio		Data				
GIEFR529				1071366		Act. BW	92	74				
LCHMN MDLD HUYWT2463						Adj. WW	117	688				
LONK DISCOVERY G725						Adj. YW	107	928				
LEACHMAN DINA 7011						ADG	85	1.5				
LONK DISCOVERY K122745002						SC						
LMAN NONE BETTER 9604						Frame						
RED EGGEN NONE BETTER						<b>EPD Top% Data</b>						
RED SPUR COUNTESS 20E						MARB	0.41					
BJR EASY RIDER 781						YG	0.12					
BJR MAKE MY DAY 981						CW	19					
BJR TOW KANA 117-710						REA	-0.34					
DMW BUCKEYE MARILYN L23767842						FAT	-0.01					
LCHMN HEVNS SAKE 1002F												
BUCKEYE JERI												
BUCKEYE ISABEL												
<b>EPD Top%</b>		HB	GM	CED	BW	WW	YW	MILK	ME	HPG	CEM	STAY
		58	47	6	-0.4	56	83	15	13	6	3	6

<b>F</b>		<b>BECKTON NEBULA W616 J4</b>										
BULL		4/5/09		A100% AR		Ratio		Data				
BKTW616				1332145		Act. BW	104	74				
BECKTON NEBULA M045						Adj. WW	113	658				
BECKTON NEBULA P P707						Adj. YW	109	1139				
BECKTON LANA M809 EP						ADG	103	3				
BECKTON NEBULA PJ S543119006						SC						
BECKTON JULIO L233						Frame						
BECKTON LANA P685 JO						<b>EPD Top% Data</b>						
BECKTON LANA E083 CD						MARB	0.3	63	3.57			
BECKTON JUSTICE G302						YG	0.04	63				
BECKTON JUSTICE M M750						CW	6	85				
BECKTON LANA J278 CH						REA	-0.21	92	11.64			
BECKTON BARMAID P864 JC979188						FAT	-0.01	46	0.28			
BECKTON EPIC KJ J722												
BECKTON BARMAID M296 EP												
BECKTON BARMAID H225 HD												
<b>EPD Top%</b>		HB	GM	CED	BW	WW	YW	MILK	ME	HPG	CEM	STAY
		123	47	17	-6.6	50	76	10	-3	14	4	9
		20	74	1	1	68	67	97	17	10	48	55

<b>G</b>		<b>BUF CRK ORION W011</b>										
BULL		3/20/09		A100% AR		Ratio		Data				
VCW011				1329474		Act. BW	93	70				
BECKTON NEPTUNE RR B284						Adj. WW	102	581				
BECKTON NEPTUNE R2 K065						Adj. YW	107	1060				
BECKTON LANA C735 TP						ADG	113	3				
BECKTON NEBULA M045854775						SC		38.12				
BECKTON JULIAN GG B571						Frame		4.8				
BECKTON BELGA K285 JL						<b>EPD Top% Data</b>						
BECKTON BELGA G493 HR						MARB	0.28	83	2.51			
BECKTON JULIAN GG B571						YG	0.17	79				
BUF CRK ROMEO L081						CW	-7	99				
BUF CRK PRIMROSE 5679						REA	-0.21	93	14.77			
BUF CRK AMY T1161190558						FAT	0.06	97	0.15			
BUF CRK VAQUERO 3003												
BUF CRK AMY 5912												
BUF CRK AMY 3385												
<b>EPD Top%</b>		HB	GM	CED	BW	WW	YW	MILK	ME	HPG	CEM	STAY
		228	47	23	-8.5	43	73	21	-10	11	12	20
		2	83	1	1	92	87	57	11	57	2	8

<b>I</b>		<b>MUSHRUSH IMPRESSION X381</b>										
BULL		9/12/10		A100% AR		Ratio		Data				
MUSX381				1421172		Act. BW	84	62				
BECKTON LANCER T A664						Adj. WW	110	529				
BECKTON LANCER F442 T						Adj. YW	112	998				
BKT SUFFEINA A828 DM						ADG	114	2.93				
BUF CRK LANCER R0171050008						SC						
BECKTON JULIAN GG B571						Frame						
BUF CRK JULIET N036						<b>EPD Top% Data</b>						
BUF CRK PRIMROSE 5679						MARB	0.25	78	3.08			
BECKTON JULIAN GG B571						YG	-0.04	26				
TR JULIAN LT142						CW	22	46				
TR LANA G760						REA	0.3	17	14.31			
MUSHRUSH MADAM LT R2651085038						FAT	0	55	0.23			
BFCK CHEROKEE CNYN 4912												
MUSHRUSH ROBIN M125												
MUSHRUSH ZENA 0165												
<b>EPD Top%</b>		HB	GM	CED	BW	WW	YW	MILK	ME	HPG	CEM	STAY
		125	50	10	-4.3	65	98	17	0	13	1	10
		27	39	19	12	22	30	62	45	20	85	37

# OUR HERD SIRES...

## J LCS Z 6

BULL 3/4/12  
LCSZ6

A100% AR  
1542264

BECKTON NEBULA M045  
BECKTON NEBULA P P707  
BECKTON LANA M809 EP  
BROWN PARAMOUNT X78791379613  
5L DESTINATION 893-6215  
BROWN MS DESTINATION T7664  
BROWN MS JULIA M7788  
  
G A R RETAIL PRODUCT  
G A R GAME ON  
G A R 1407 NEW DESIGN 1683  
LCS 9151351238  
LCB RED TAIL N154  
HXC 541R  
HXC STAR LB120

Ratio		Data
Act. BW		75
Adj. WW		891
Adj. YW		1395
ADG		3.14
SC		
Frame		5.7
EPD Top%		Data
MARB	0.67	11 4.93
YG	0.26	97
CW	25	42
REA	-0.25	96 14.23
FAT	0.04	80 0.23

	HB	GM	CED	BW	WW	YW	MILK	ME	HPG	CEM	STAY
EPD	163	48	10	0.4	61	96	10	0	9	5	16
Top%	69	55	76	82	37	38	99	52	76	76	52



## K ANDRAS IN FOCUS 1158

BULL 9/27/11  
WSA1158

A100% AR  
1506889

S A F FOCUS OF E R  
MYTTY IN FOCUS  
MYTTY COUNTESS 906  
ANDRAS IN FOCUS B1521366630  
S A V 8180 TRAVELER 004  
ANDRAS PINETA B91  
DI PINETA 319  
  
C A FUTURE DIRECTION 5321  
MORGANS DIRECTION 111 9901  
MCC BARBIE 9901 5205 797  
ANDRAS PINETA B1121288745  
BOYD NEW DAY 8005  
ANDRAS PINETA B73  
ANDRAS PINETA 444

Ratio		Data
Act. BW	108	74
Adj. WW	101	599
Adj. YW		
ADG		
SC		
Frame		
EPD Top%		Data
MARB	0.92	8
YG	0.11	79
CW	18	63
REA	0.31	29
FAT	0.07	98

	HB	GM	CED	BW	WW	YW	MILK	ME	HPG	CEM	STAY
EPD	90	51	6	-2.3	53	85	26	-6	17	5	6
Top%	68	40	48	45	66	63	18	26	8	43	82



## L BECKTON JULIAN B139 J8

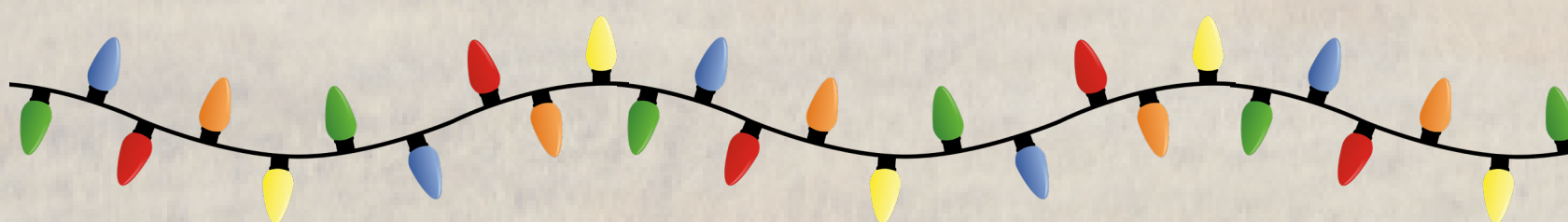
BULL 3/4/14  
BSFB139

2100% AR  
1705695

BECKTON JULIAN U699 L5  
BECKTON JULIAN X721 E6  
BECKTON LANA U329 EP  
BECKTON JULIAN Z382 J71544962  
BECKTON JULIAN U699 L5  
BECKTON LARKABA X064 J  
BECKTON LARKABA U475 CT  
  
BECKTON JULIAN U699 L5  
BECKTON JULIAN X721 E6  
BECKTON LANA U329 EP  
BECKTON CHRISTY Z083 J1544521  
BECKTON DOMINOR Z1 R610  
BECKTON CHRISTY X648 D  
BECKTON CHRISTY J743 JL

Ratio		Data
Act. BW	98	63
Adj. WW	115	584
Adj. YW	103	1039
ADG	91	2.83
SC		
Frame		
EPD Top%		Data
MARB	0.43	49 2.61
YG	0.26	85
CW	5	94
REA	-0.1	81 12.38
FAT	0.07	98 0.21

	HB	GM	CED	BW	WW	YW	MILK	ME	HPG	CEM	STAY
EPD	241	47	19	-5.9	43	70	25	-12	12	11	22
Top%	1	71	2	2	92	89	24	8	46	3	2



# OUR HERD SIRES...

## M GIEFER OCTANT B515

<b>BULL</b>	5/5/14	<b>A100% AR</b>									
<b>GIEFB515</b>		1713792									
BECKTON NEPTUNE R2 K065 BECKTON NEBULA M045 BECKTON BELGA K285 JL <b>BUF CRK ORION W011</b> 1329474 BUF CRK ROMEO L081 BUF CRK AMY T116 BUF CRK AMY 5912  BUF CRK MEDALLION N328 BUF CRK MEDALLION S347 BUF CRK REDPRIDE 6089 <b>GIEFER SUNFLOWER Y015</b> 1452828 LONK DISCOVERY K122 GIEFER HOBOS GIRL S024 AQUILA BH 920 917											
		<b>Ratio</b>	<b>Data</b>								
		Act. BW	66								
		Adj. WW	547								
		Adj. YW	802								
		ADG	105 1.58								
		SC	30.51								
		Frame	4.11								
		<b>EPD Top%</b>	<b>Data</b>								
		MARB	0.36 66								
		YG	0.2 89								
		CW	10 87								
		REA	-0.16 89								
		FAT	0.06 94								
<b>EPD</b>	HB	GM	CED	BW	WW	YW	MILK	ME	HPG	CEM	STAY
<b>Top%</b>	225	45	21	-7.5	43	68	16	-6	10	9	21
	3	94	1	1	92	91	90	19	65	13	3



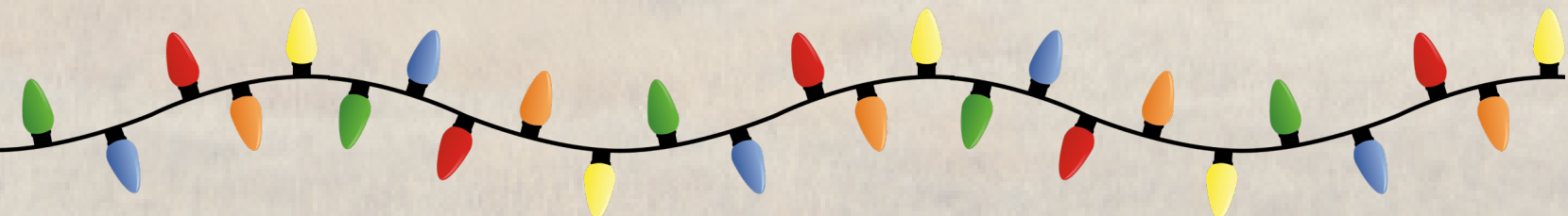
## N BECKTON NEW ERA D206 E3

<b>BULL</b>	3/11/16	<b>A100% AR</b>									
<b>BSFD206 PB</b>		3551017									
BECKTON NEBULA P P707 BECKTON NEW ERA Y194 BKT LARKEISA T310 JC <b>BECKTON NEW ERA B265</b> J21706011 BECKTON JULIAN G3 P608 BECKTON MINERVA W901 J BECKTON MINERVA L344 CH  BECKTON EMPEROR T641 E2 BECKTON EMPEROR Z750 N3 BECKTON LANA U789 NB <b>BECKTON MINOLA B063</b> E1705766 BECKTON NEBULA W130 D3 BECKTON MINOLA Z752 N BECKTON MINOLA N751 JL											
		<b>Ratio</b>	<b>Data</b>								
		Act. BW	93 59								
		Adj. WW	103 497								
		Adj. YW	101 1013								
		ADG	98 3.21								
		SC									
		Frame									
		<b>EPD Top%</b>	<b>Data</b>								
		MARB	0.39 59 2.68								
		YG	0.15 73								
		CW	21 57								
		REA	-0.1 81 11.14								
		FAT	0.03 51 0.15								
<b>EPD</b>	HB	GM	CED	BW	WW	YW	MILK	ME	HPG	CEM	STAY
<b>Top%</b>	201	49	20	-4.3	60	96	14	-5	11	9	16
	14	35	1	8	42	39	94	23	50	21	45



## O GIEFER JUXTAPOSITION D591

<b>BULL</b>	7/24/16	<b>A100% AR</b>									
<b>GIEFD591</b>		3580565									
BECKTON JULIAN X721 E6 BECKTON JULIAN Z382 J7 BECKTON LARKABA X064 J <b>BECKTON JULIAN B139 J8</b> BECKTON JULIAN X721 E6 BECKTON CHRISTY Z083 J BECKTON CHRISTY X648 D  BECKTON NEBULA M045 BUF CRK ORION W011 BUF CREEK AMY T116 <b>GIEFER MEADOWLARK B091</b> BUF CRK MEDALLION S347 GIEFER MISS BLISS X102 GIEFER MISS BLISS U059											
		<b>Ratio</b>	<b>Data</b>								
		Act. BW	93 59								
		Adj. WW	103 497								
		Adj. YW	101 1013								
		ADG	98 3.21								
		SC									
		Frame									
		<b>EPD Top%</b>	<b>Data</b>								
		MARB	0.37 64 2.68								
		YG	0.19 86								
		CW	16 72								
		REA	-0.22 94 11.14								
		FAT	0.03 61 0.15								
<b>EPD</b>	HB	GM	CED	BW	WW	YW	MILK	ME	HPG	CEM	STAY
<b>Top%</b>	259	46	20	-6.4	44	71	26	-8	13	11	24
	1	84	2	1	91	88	22	14	23	3	1



## SALE TERMS AND CONDITIONS...

**TERMS:** Terms of the sale are cash, check, or other terms agreed to in writing between seller and buyer, payable immediately upon conclusion of the sale before animals will be moved. Seller reserves the right to require a certified check as settlement before releasing any livestock.

**PURCHASER'S RISK:** All animals are the owner's risk prior to their sale and become property of the purchaser as soon as declared sold by the auctioneer.

**BIDDING:** Any disputes or challenges regarding bids or tie bids will be settled by the auctioneer and his decision will be final.

**CERTIFICATE OF REGISTRY:** A certificate of registry for all cattle will be transferred to the buyer at the seller's expense.

**ANNOUNCEMENTS:** Any errors or changes in information contained in the catalog will be announced from the block and such announcements shall take precedence over the information contained herein.

**HEALTH:** All animals are eligible for interstate shipment. Interstate health papers prepared by an accredited veterinarian can be furnished on each animal sold. All efforts for the exportation of livestock can be arranged through the seller.

**LIABILITIES:** All persons who attend the sale do so at their own risk. The seller and auction facility assume no liability for any accidents that may occur. Neither does the seller or auction facility assume liability for the loss or injury to livestock due to theft, mysterious disappearance, sickness, improper handling, or Act of God. Any legal action that may in exceptional cases be taken must be between the buyer and the seller. This catalog has been prepared by the seller from pedigrees and information supplied by sources deemed reliable; however, the seller will in no way guarantee the pedigree, percentages of the animal selling, or data included in this catalog. Any exceptions taken are between the buyer and the seller.

**CONTRACT:** The above terms and conditions of sale shall constitute a contract between the buyer and seller of each animal and shall be equally binding upon both. Each sale or resale of an animal constitutes a separate transaction.

**PHONE BIDS:** Telephone bids will be taken by the auctioneer. Kyle Gilchrist's cell number is (641) 919-1077.



## OUR LOCAL HISTORY...

The 1803 Louisiana Purchase, orchestrated by President Thomas Jefferson, merged into the United States the great expanse we now know as Western Kansas. In 1865, entrepreneurs seized an opportunity for trade with Denver City – on the western edge of what was then Kansas Territory – and established the Butterfield Overland Despatch (BOD) Trail. The BOD followed the Smoky Hill River to the Hackberry Creek (in modern-day Trego County), where Downer's Station was built, and where the trail took a short deviation along the creek; an Indian raid later destroyed the station. Although the part of our ranch (affectionately called Dinosaur because of its many fossils) which includes the Smoky Hill River was bypassed by the route's deviation,

Castle Rock – a prominent landmark on the trail – can be seen in the background of some of our photos. And though the BOD didn't cross our land, the WaKeeney-Dighton Stagecoach did – and (according to history) so did the famous George Armstrong Custer. Stagecoach ruts remain visible, and we have ridden horseback on the river bank where then-Lieutenant Custer and his cavalry troops trod.

In 1877 business partners Albert Warren and James Keeney formed the Warren, Keeney & Co., and set about designing "The Queen City of the High Plains" – WaKeeney. The town was planned in a Chicago office, including the 80-foot wide streets for which we are grateful in this day of the automobile. Known today as "The Christmas City of the High Plains," a 35-foot Christmas tree is decorated annually in the intersection of Main Street and Russell Avenue. Trego County – for which WaKeeney is the county seat – was organized in June of 1879, and named for Civil War Captain Edgar Poe Trego, of the 8th Kansas Division, who died in the 1863 Battle of Chickamauga.

The Kansas Pacific Railway reached WaKeeney in the 1870s. About a mile west of town, the crew building track came under Indian attack. History records that some of the crew fled northward and sought refuge under a cliff. Although the exact location is now unknown, we pasture the area, and our imagination is fueled as we ride by the cliffs and contemplate that these outcroppings – a serene scene for grazing cattle and horses, and even Christmas card photos – were once defensive positions for men engaged in the fight of their lives.

Area State historical sites include Old Fort Hays, Fort Wallace, and Cottonwood Ranch; National attractions are Ft. Larned and Nicodemus. Castle Rock and the Sternberg Museum (home to some of the aforementioned fossils) are also nearby. A little further northeast is the cabin where Dr. Brewster M. Higley in the early 1870s penned the words to a poem he titled "My Western Home" – which was set to music in 1947, and became the Kansas State Song we know as "Home on the Range."

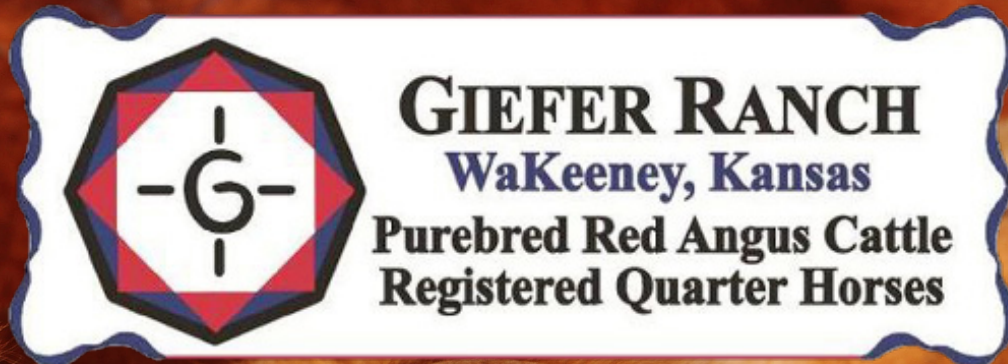
Oh, my – for those who travel this area and think it is just boring "flyover" country – what a rich history we have! This is why we are proud to call this Our Home on the Range of the Great American Plains!

Castle Rock in background



**TIME DATED MATERIAL  
DO NOT DELAY!!**

PRESORT  
FIRST CLASS  
US POSTAGE  
PAID  
PERMIT #2668  
KC MO



*Our Home on the Range of the Great American Plains  
Your Source for Prairie-Proven Performance*

BERNIE, NISHI (DVM), BERNARD, HELEN, SYBIL & WYNDOM  
HOME: 785-743-2498 · BERNIE GIEFER: 785-635-5036 · NISHI GIEFER: 785-814-0004

**Annual Sale**

**December 12, 2019**

**12 O'Clock Noon CST**  
WaKeeney Livestock LLC  
WaKeeney, Kansas